

Red alder (*Alnus rubrum*)

- Heartwood ranges from pale tan to light reddish brown
- Low density wood
- Diffuse porous
- Rays
 - aggregate rays disperse but distinct
 - narrow rays indistinct with hand lens
- Parenchyma not visible

Aggregate ray

Uniseriate ray

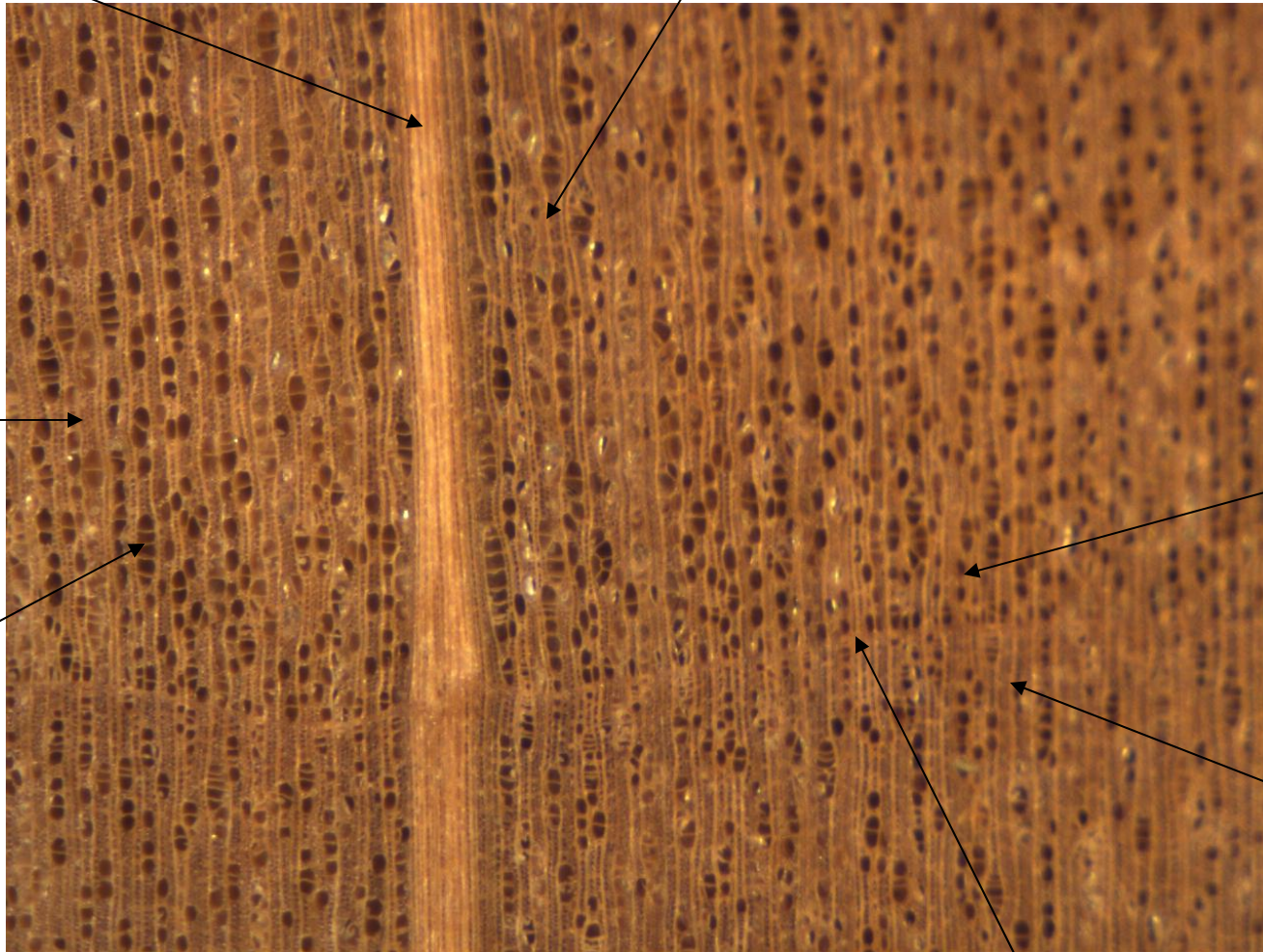
Fibers

Earlywood

Pore

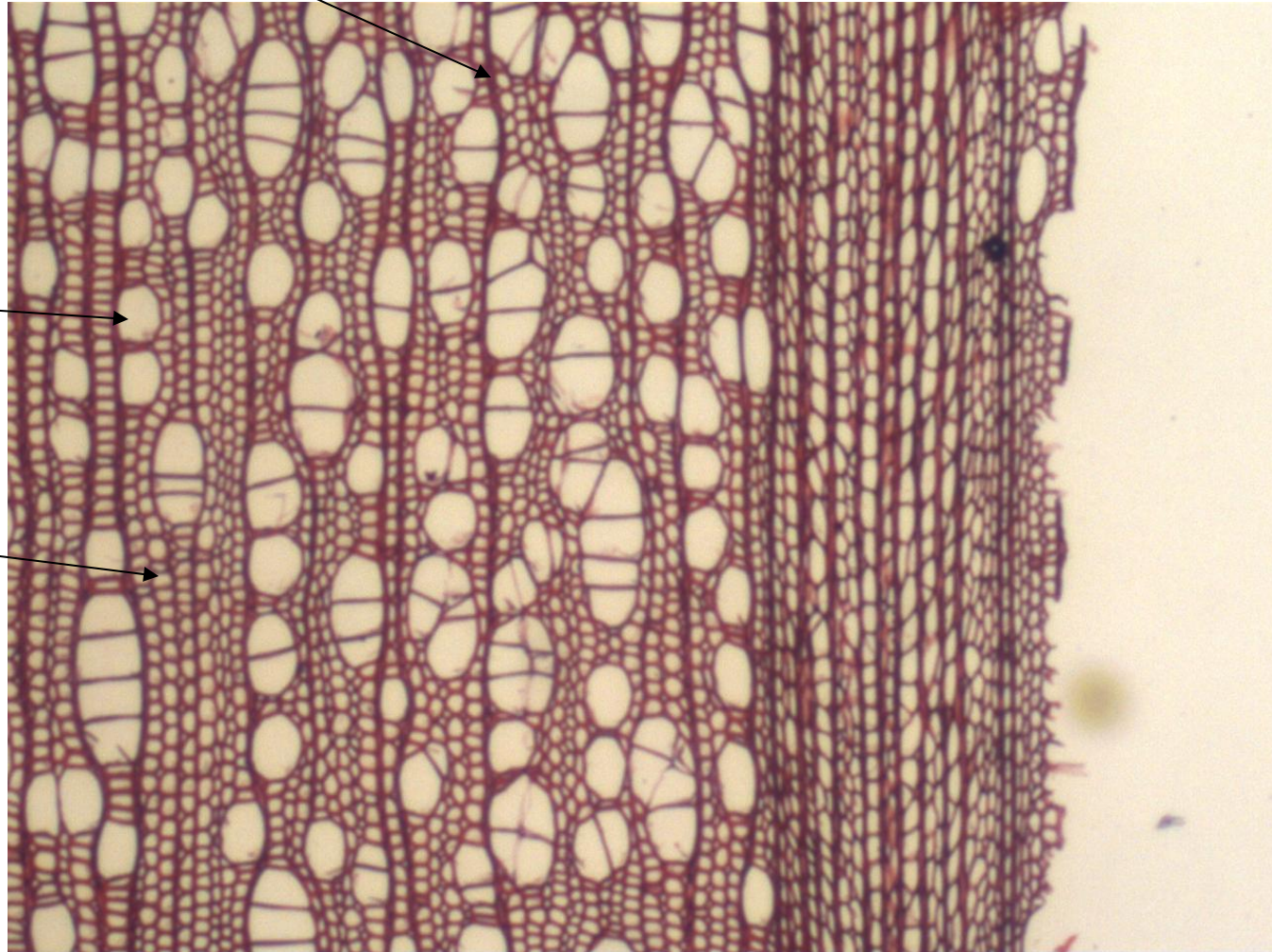
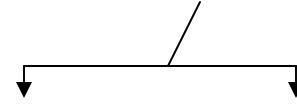
Latewood

Growth ring boundary



Uniseriate ray

Aggregate ray

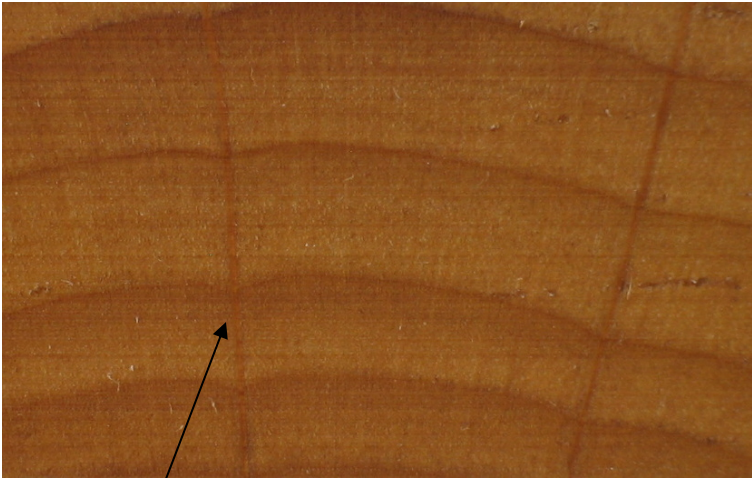
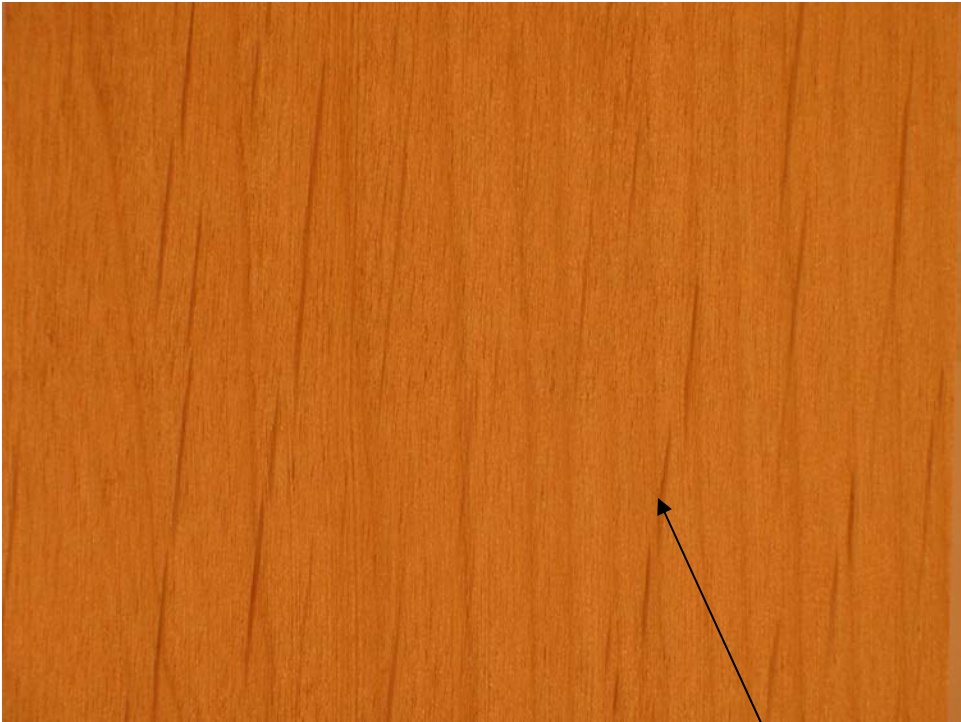


Pore

Fibers

Tangential surface

End grain



Aggregate rays