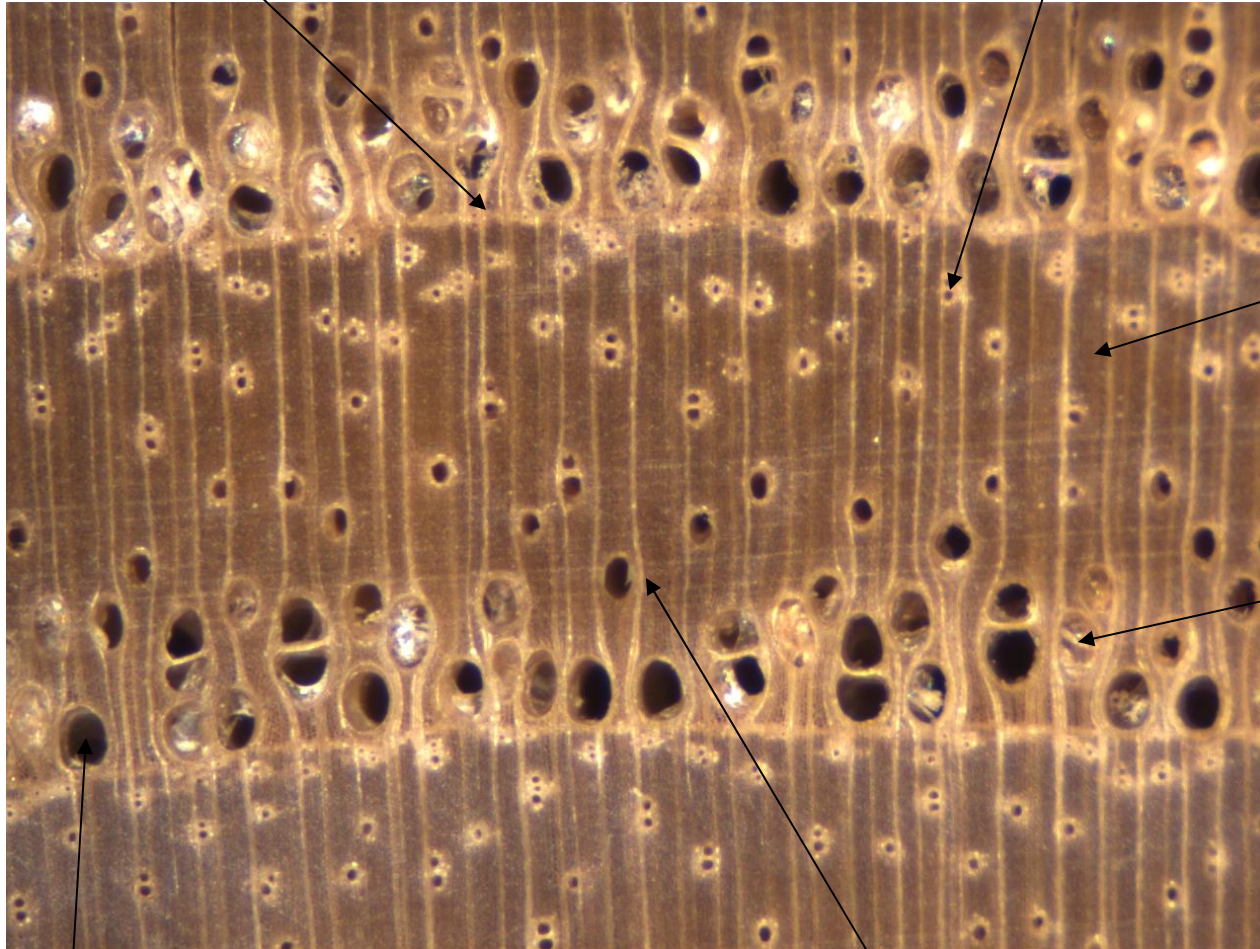


Ash (*Fraxinus* sp.)

- Light brown or greyish brown
- Very dense wood
- Ring porous (with some examples more semi-ring porous)
- Latewood pores surrounded by parenchyma (becoming more joined together towards the end of the growth ring)
- Rays visible with hand lens but not distinct

Growth ring boundary

Latewood pores



Fibers

Tyloses

Earlywood pore

Multiseriate ray

