

Bald cypress (*Taxodium distichum*)

- Very variable heartwood colour (yellowish to light or dark brown)
- Slightly rancid odour
- Abrupt earlywood-latewood transition
- Wide range in growth ring width (and latewood width) within one piece
- No resin canals
- Very coarse texture

Growth ring boundary

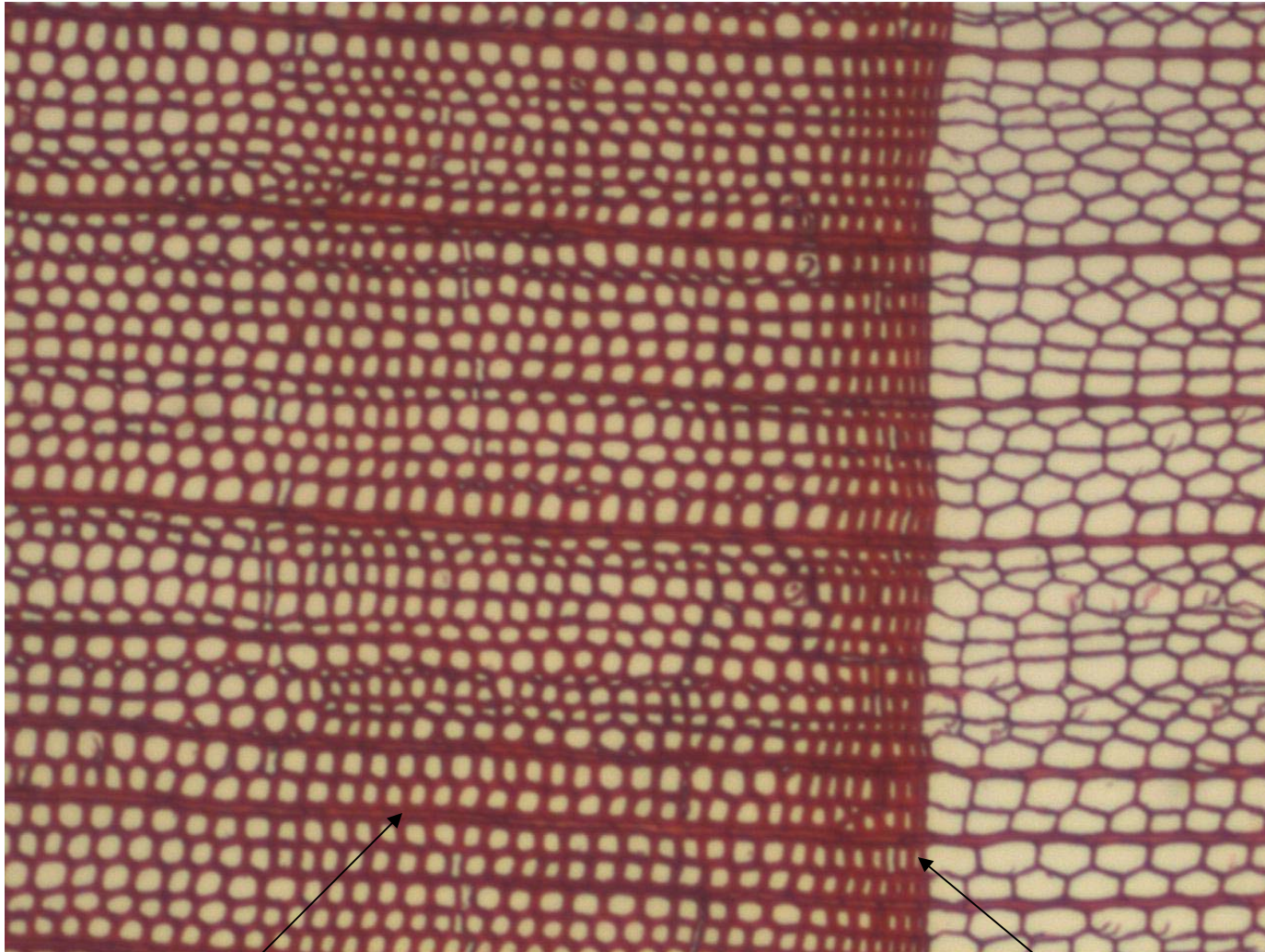


↕ Latewood

↕ Earlywood

Uniseriate ray

Latewood Earlywood



Uniseriate ray

Growth ring boundary

Variation in growth ring width
and proportion of latewood



Longitudinal grain

