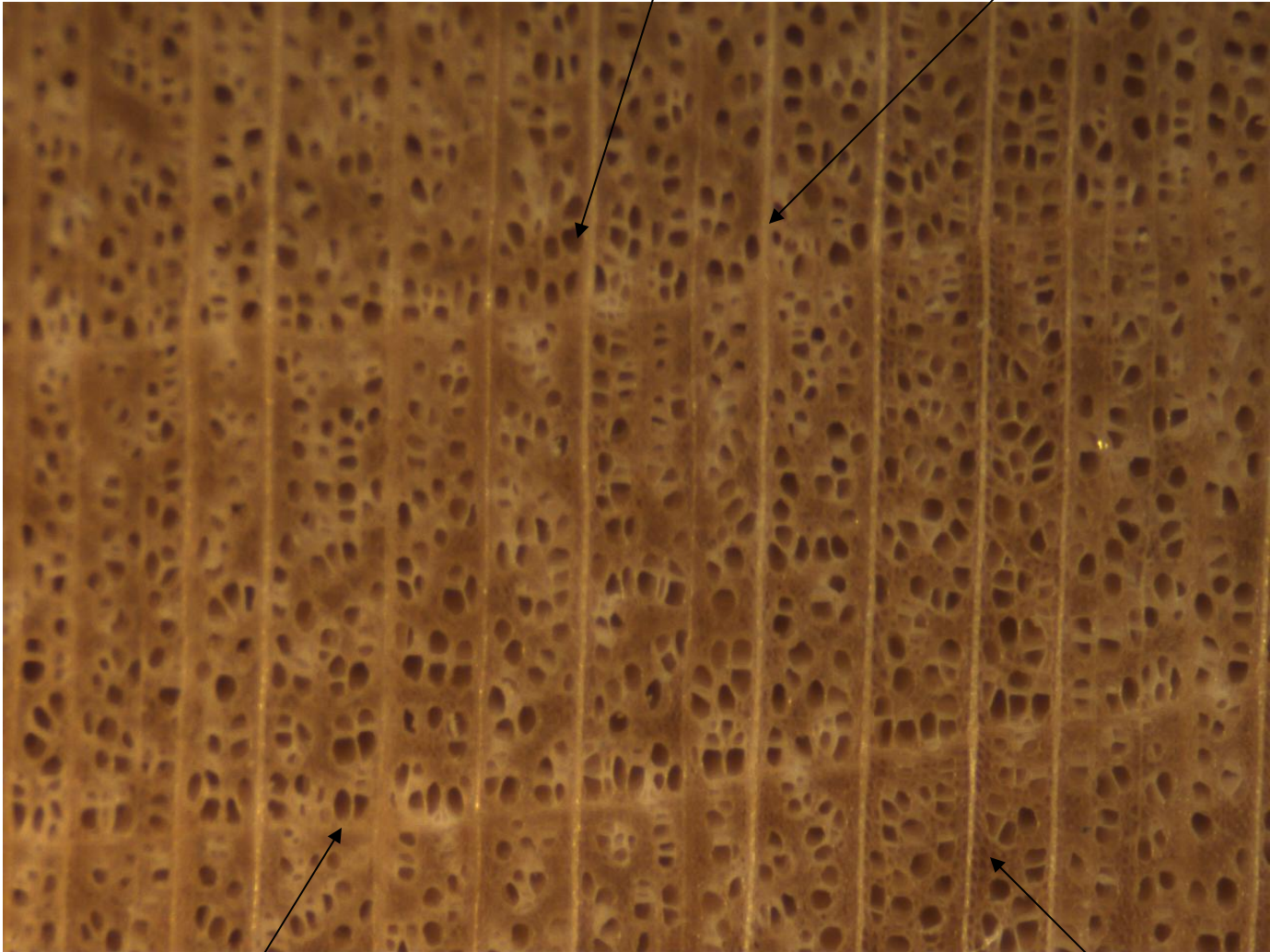


Basswood (*Tilia* sp.)

- Creamy white to pale brown heartwood
- Very low density wood
- Diffuse porous
 - pores solitary or in clusters
- Rays distinct with hand lens
- Boundary parenchyma visible



Pore

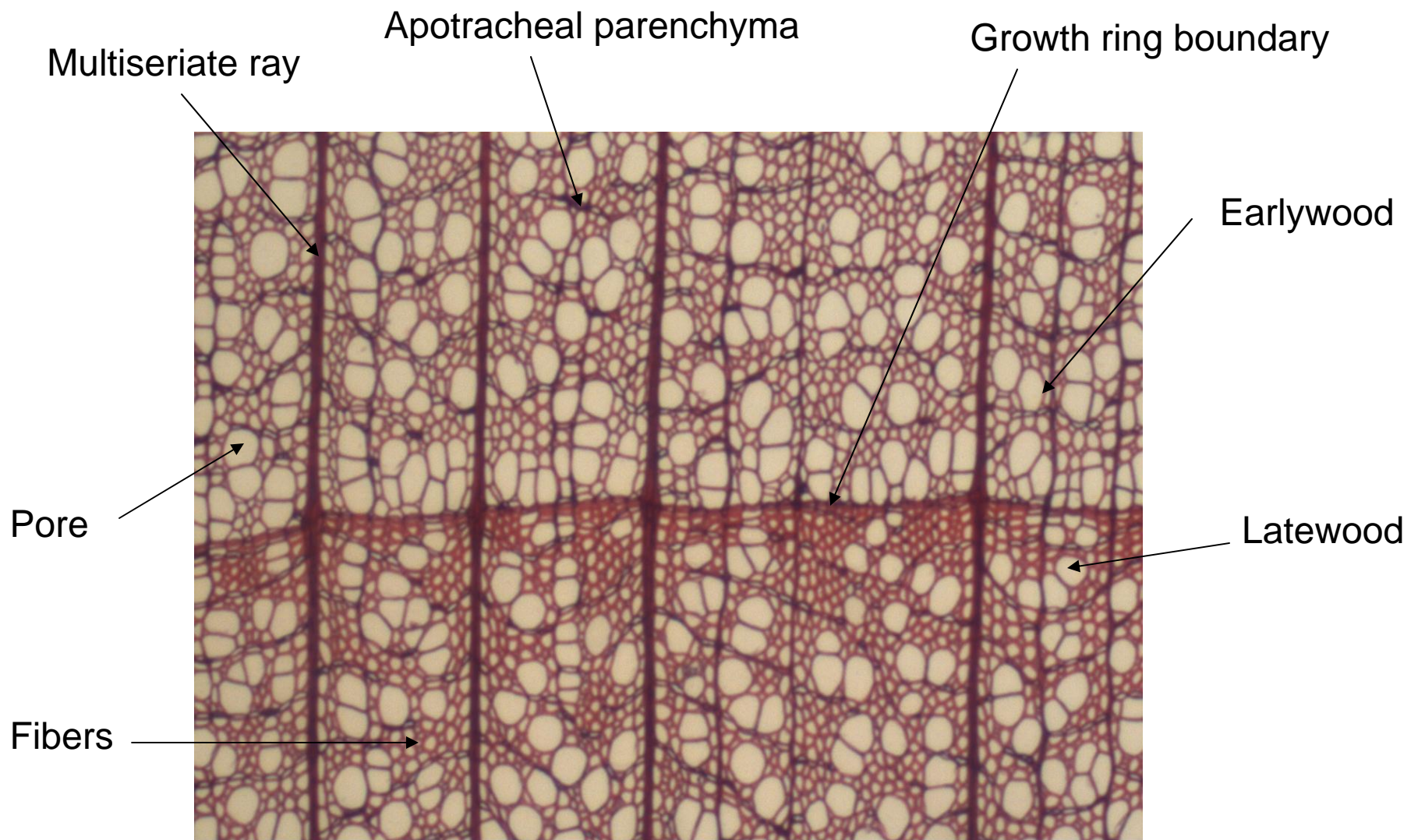
Multiseriate ray

Latewood

Earlywood

Growth ring boundary

Fibers



End grain

