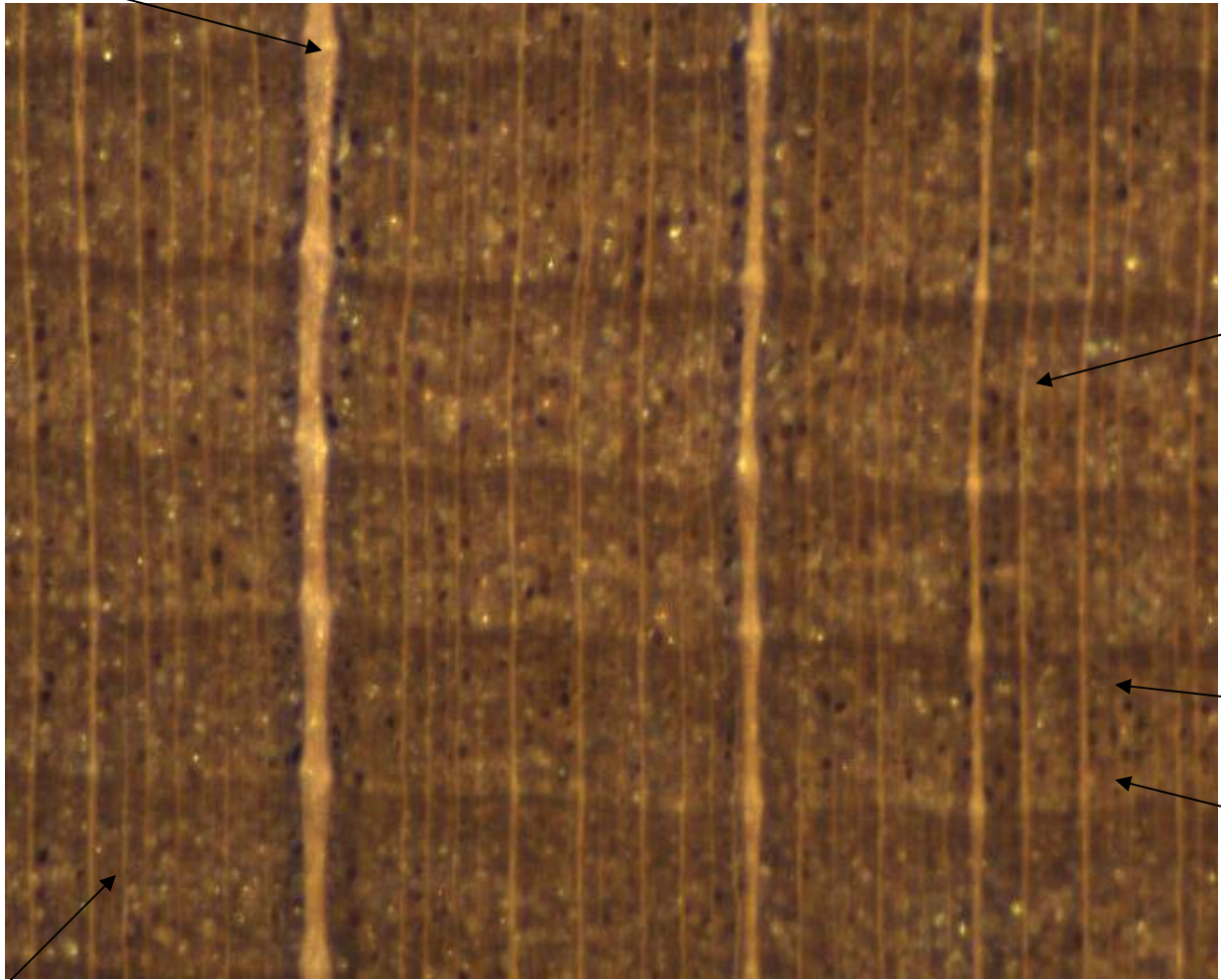


# Beech (*Fagus* sp.)

- Light heartwood with reddish tinge
- Dense wood
- Diffuse porous
- Rays of two distinct sizes
  - Largest rays very distinct on all surfaces
- Parenchyma not visible

Multiseriate ray



Fibers

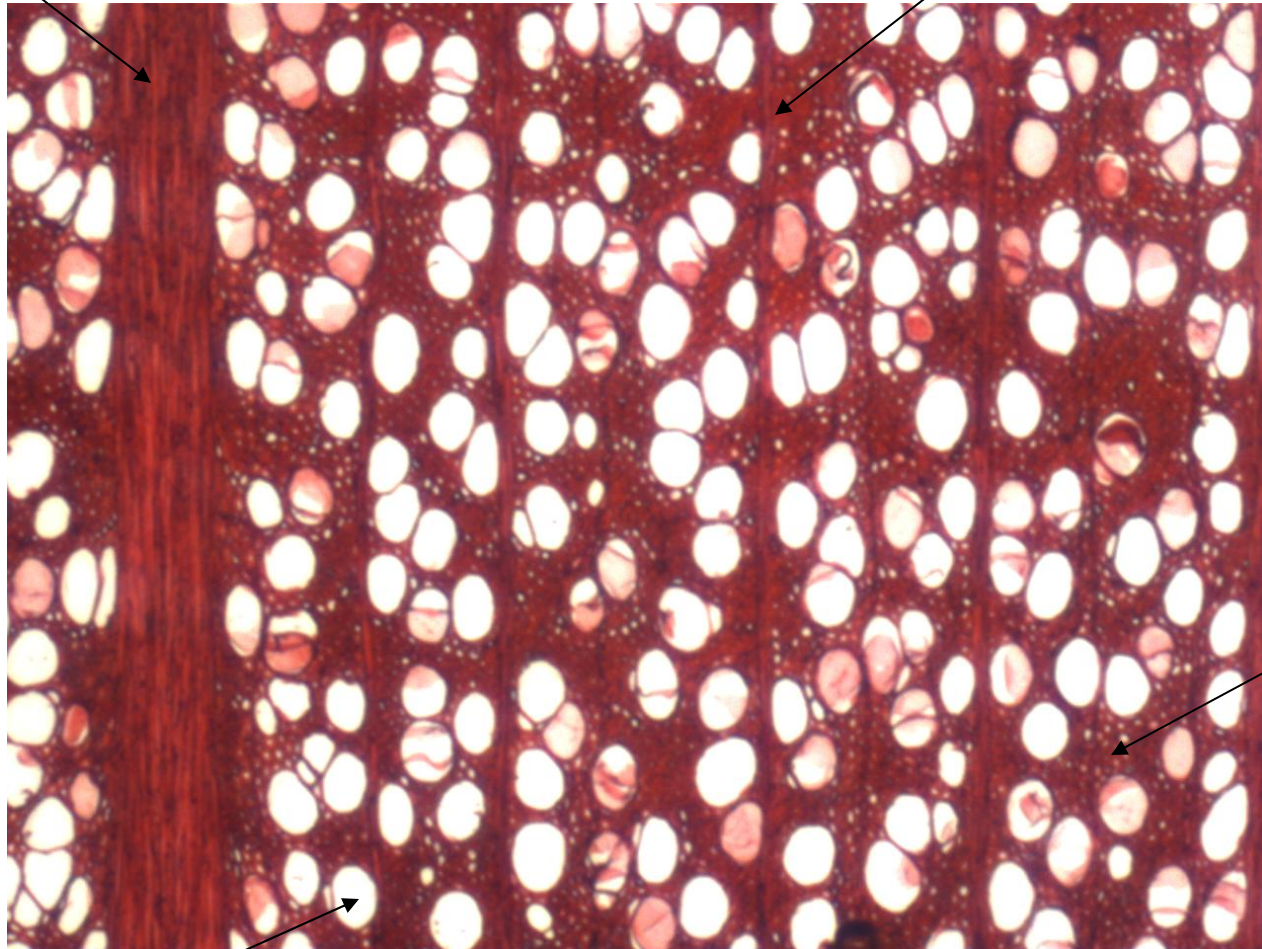
Latewood

Earlywood

Uniseriate ray

Multiseriate ray

Uniseriate ray



Fibers

Pore

Rays ends on  
tangential surface

