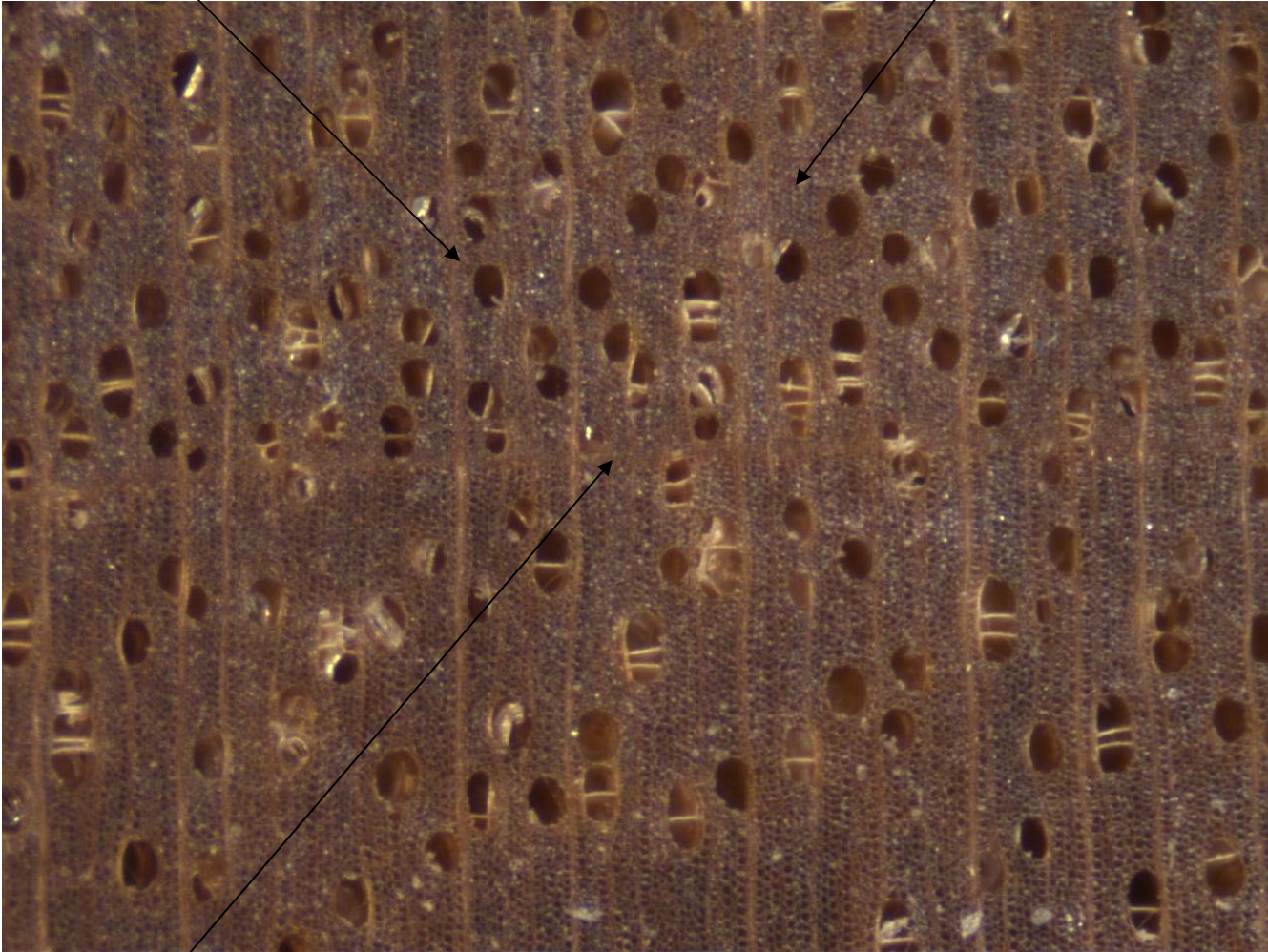


Birch (*Betula* sp.)

- Light to dark brown or reddish brown
- Moderately to very dense wood
- Diffuse porous
- Pores often in radial multiples
- Rays indistinct, narrower than diameter of pores
- Parenchyma not visible

Multiseriate ray

Fibers

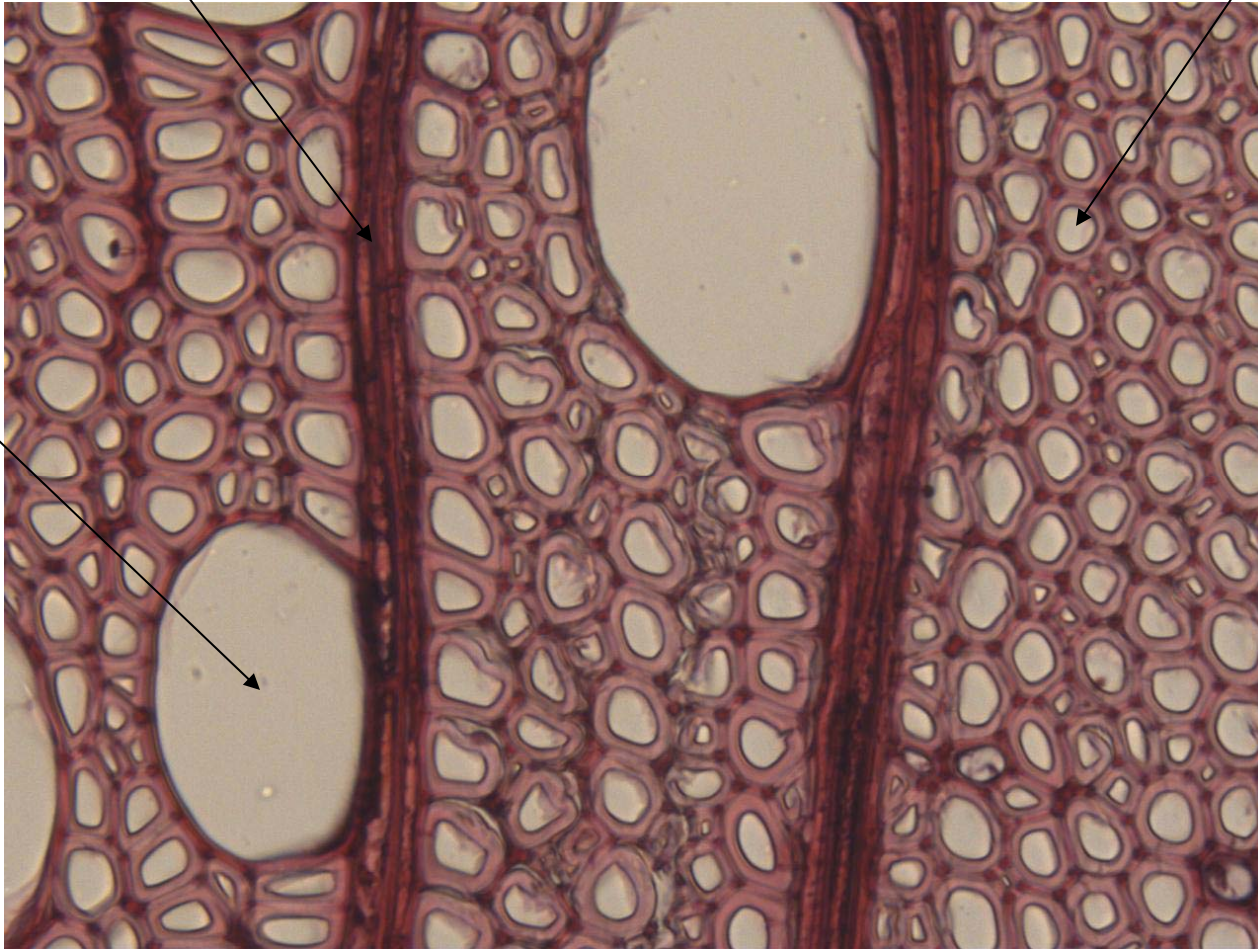


Growth ring boundary

Multiseriate ray

Fiber

Pore



Ray ends on
tangential surface

