

# Black cherry (*Prunus serotina*)

- Moderately dense wood
- Reddish brown heartwood
- Diffuse porous
  - solitary row of pores are beginning of growth ring
- Rays bright and visible with naked eye
- Parenchyma not visible

Fibers

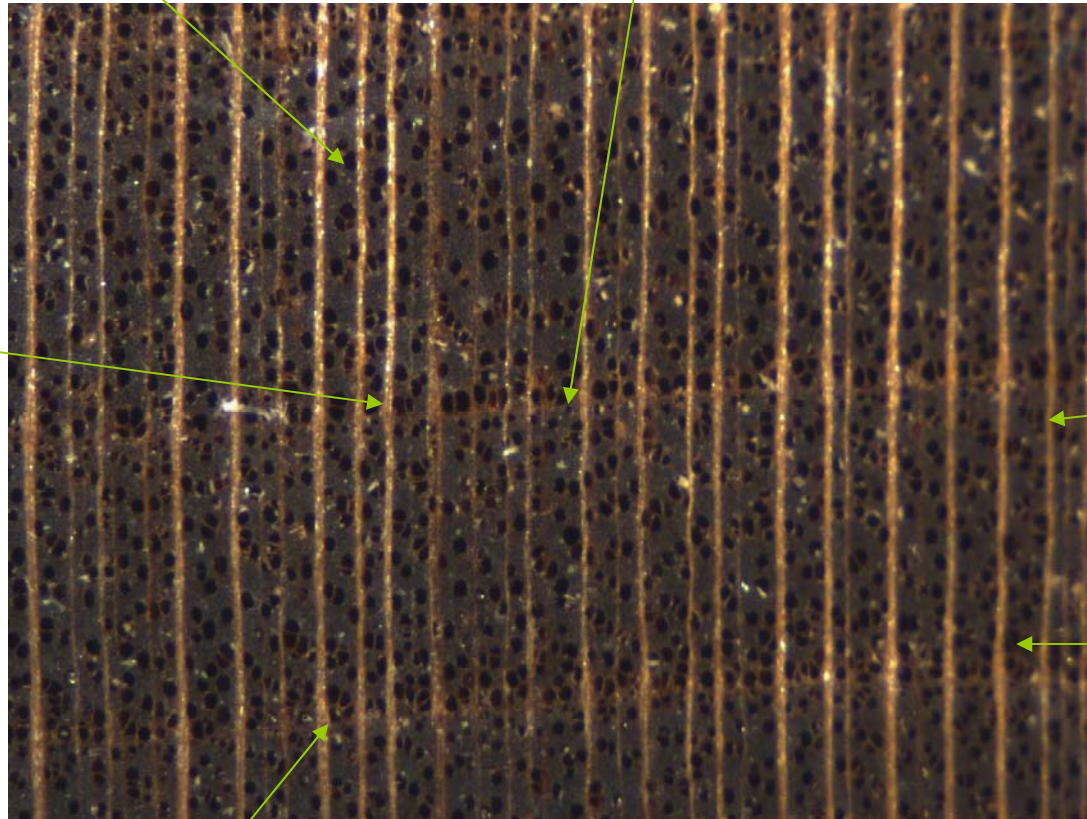
Growth ring boundary

Row of  
Earlywood pores

Latewood

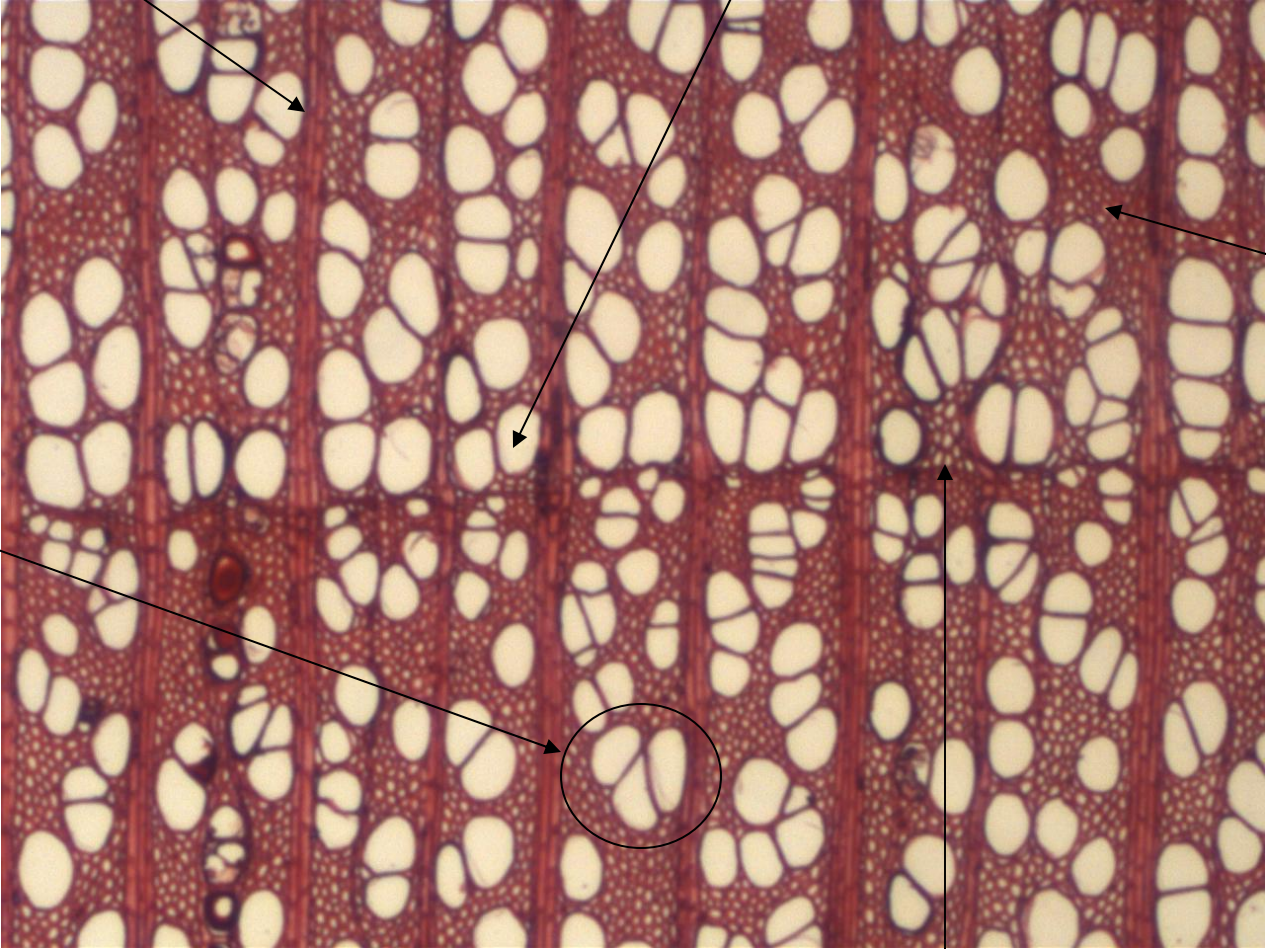
Earlywood

Multiseriate ray



Multiseriate ray

Row of earlywood pores



Fibers

Pore cluster

Growth ring boundary



## Endgrain



Rays

Row of earlywood pores