

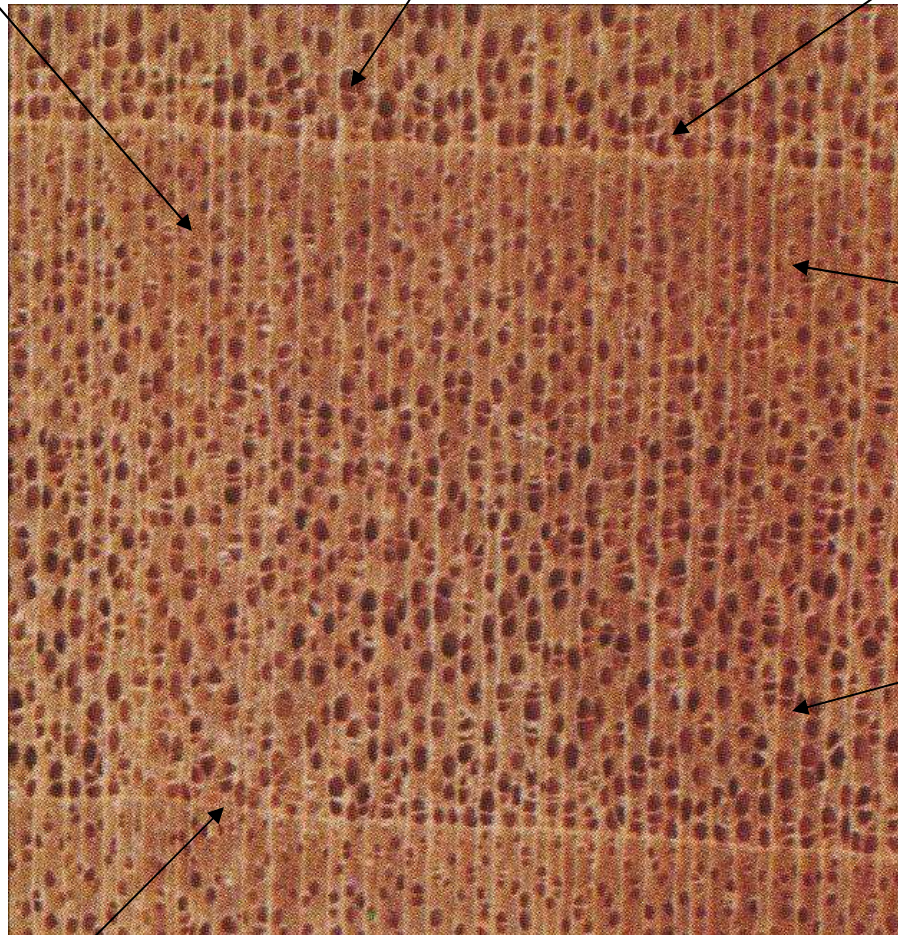
Cottonwood (*Populus trichocarpa*)

- Creamy white heartwood
- Very low density wood
- Diffuse porous
 - pores solitary or in radial multiples
 - pores smaller at end of growth ring
- Rays indistinct with hand lens
- Parenchyma not visible
- Indistinguishable from Aspen with hand lens

Fibers

Pore

Uniseriate ray



Latewood

Earlywood

Growth ring boundary

Uniseriate ray

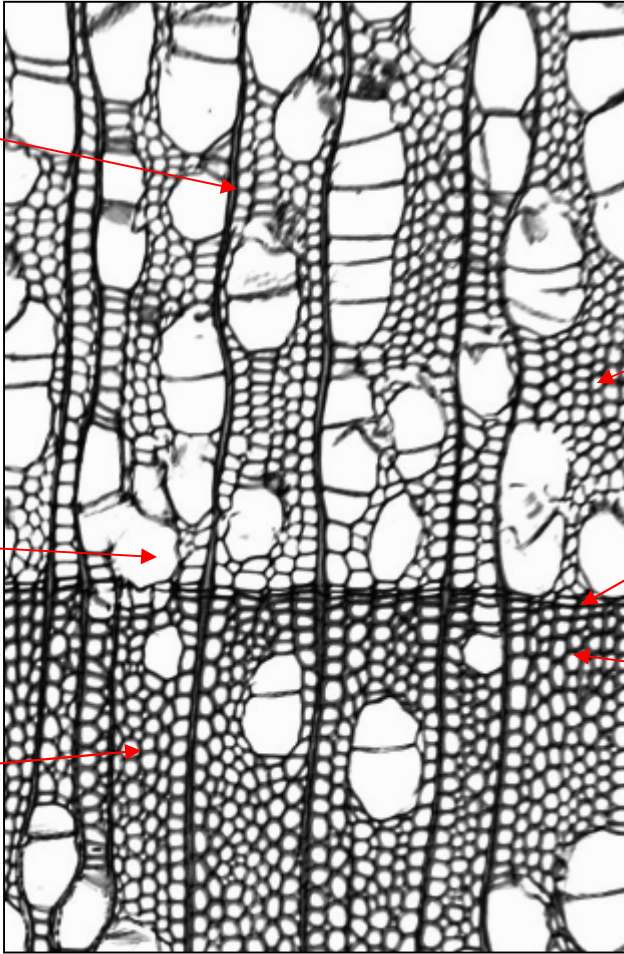
Earlywood

Pore

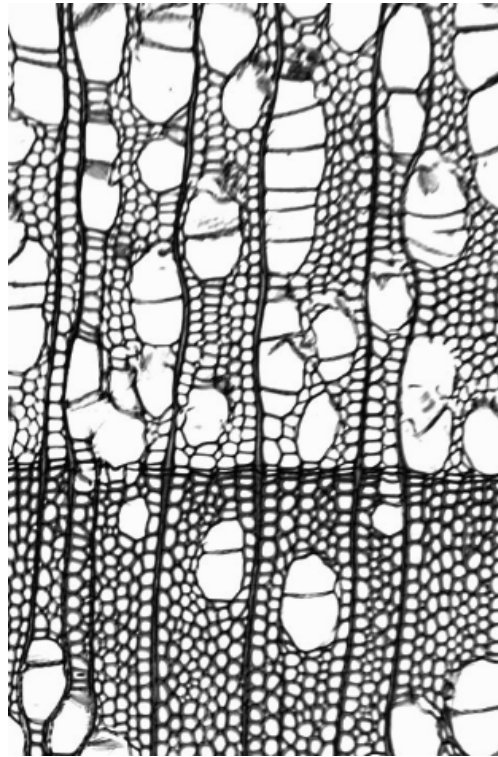
Growth ring boundary

Latewood

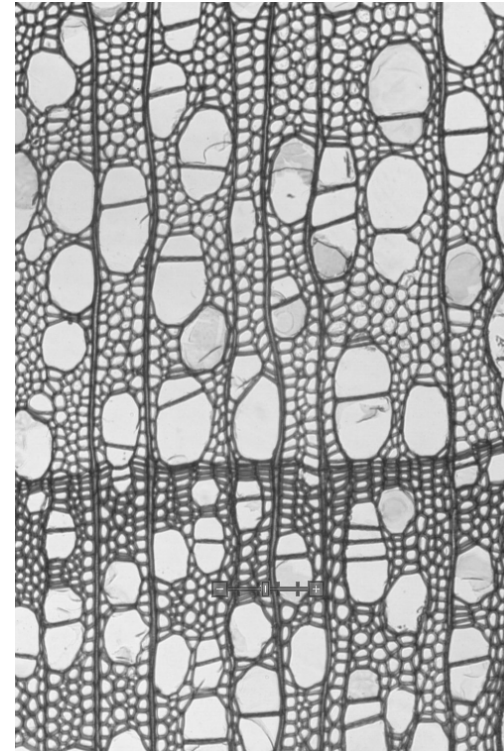
Fibers



Cottonwood



Aspen



The pore diameter in cottonwood is sometimes described as being greater than in aspen but it is not a reliable feature.