

Douglas-fir (*Pseudotsuga menziesii*)

- Yellow-orange to pale reddish brown heartwood
- Mild resinous odour
- Abrupt earlywood-latewood transition
- Resin canals small, relatively few, variable in distribution

Resin canals

Growth ring boundary



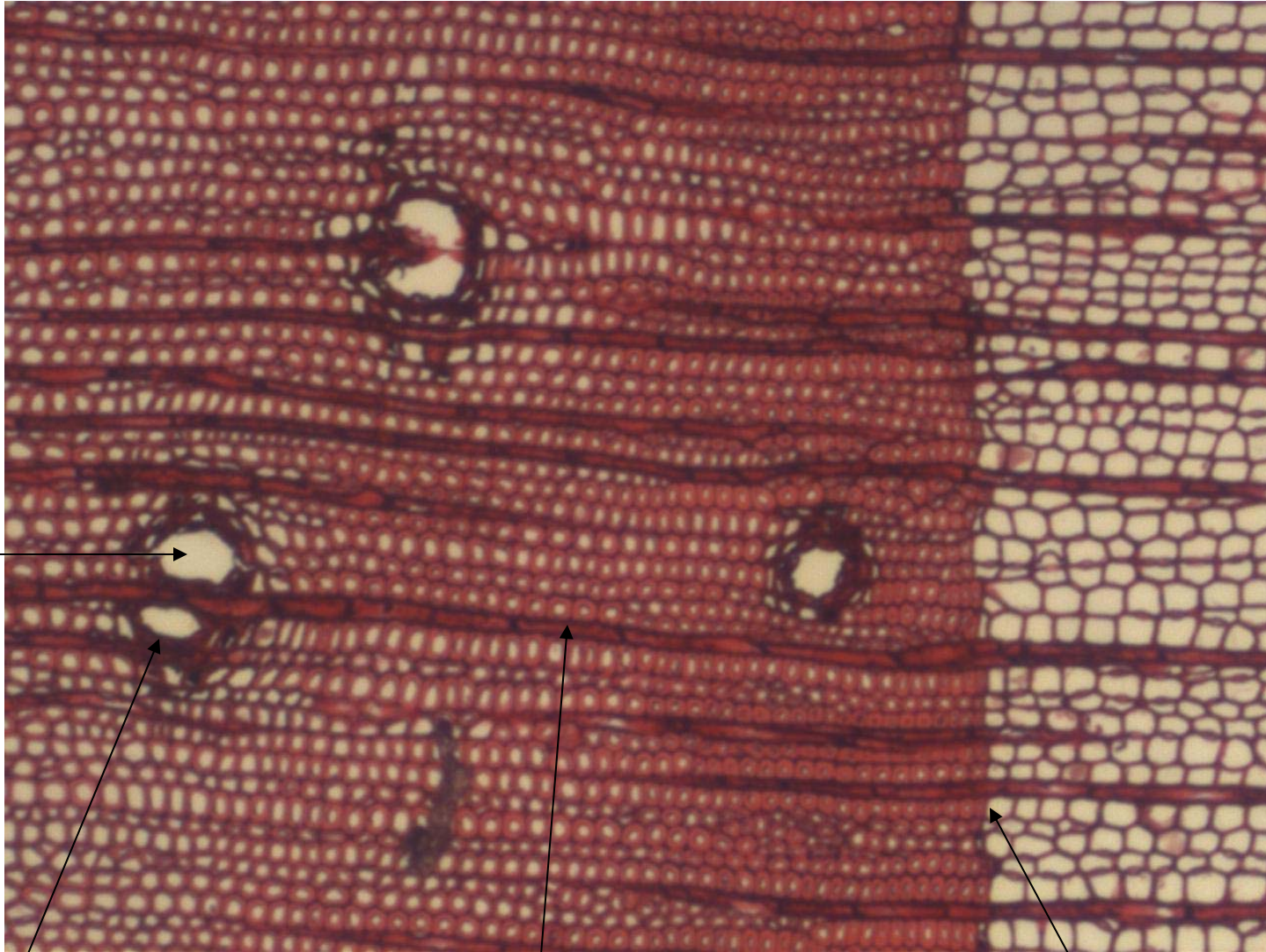
Latewood

Earlywood

Uniseriate ray

Latewood

Earlywood



Resin canal

Epithelial parenchyma

Uniseriate ray

Growth ring boundary

Variation in growth rate



Second growth
(4 rings/inch)

Old growth
(50 rings/inch)