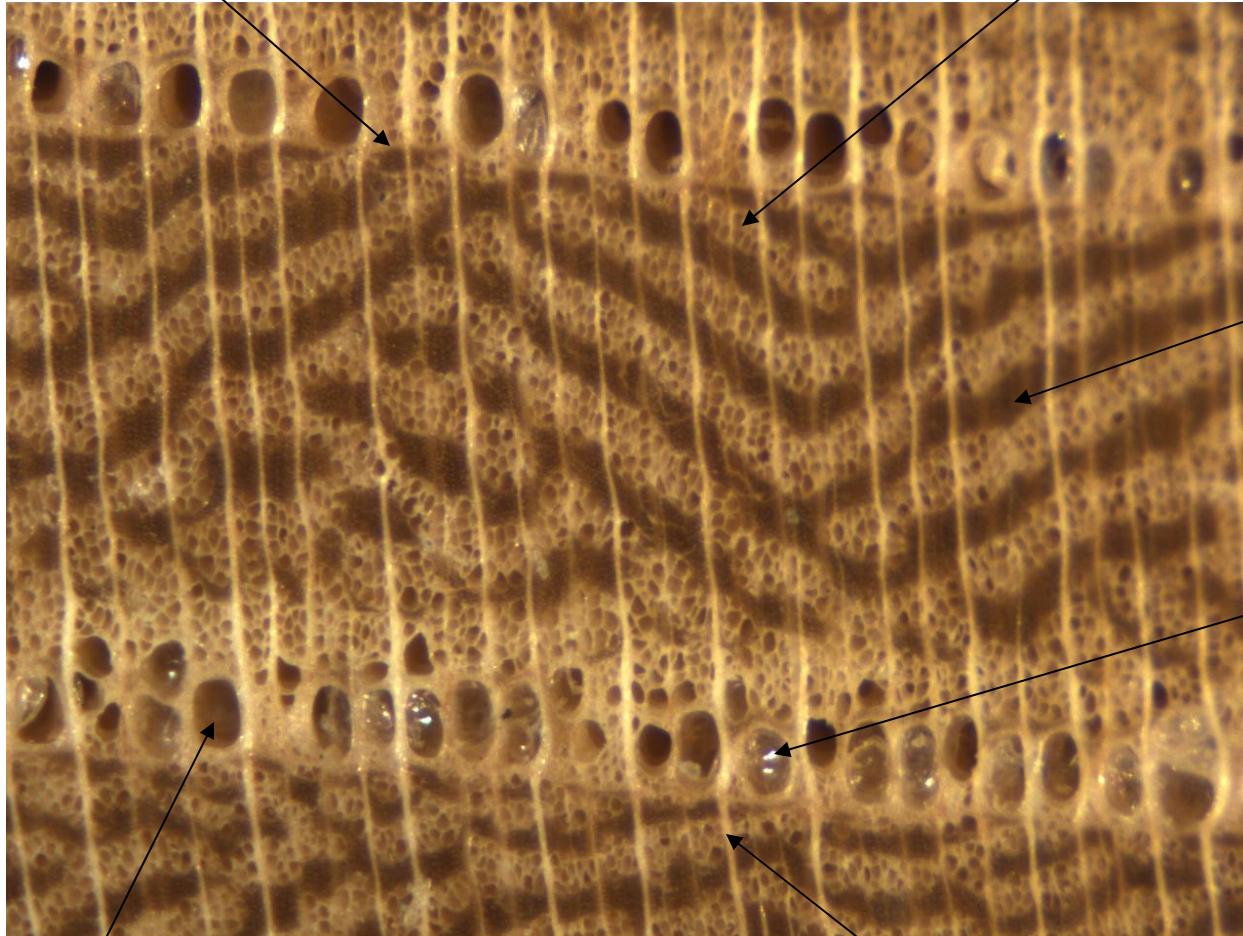


Elm (*Ulmus* sp.)

- Light brown to brown or reddish brown heartwood
- Very dense wood
- Ring porous
- Latewood pores in wavy band
- Rays visible with hand lens but not distinct

Growth ring boundary

Latewood pores

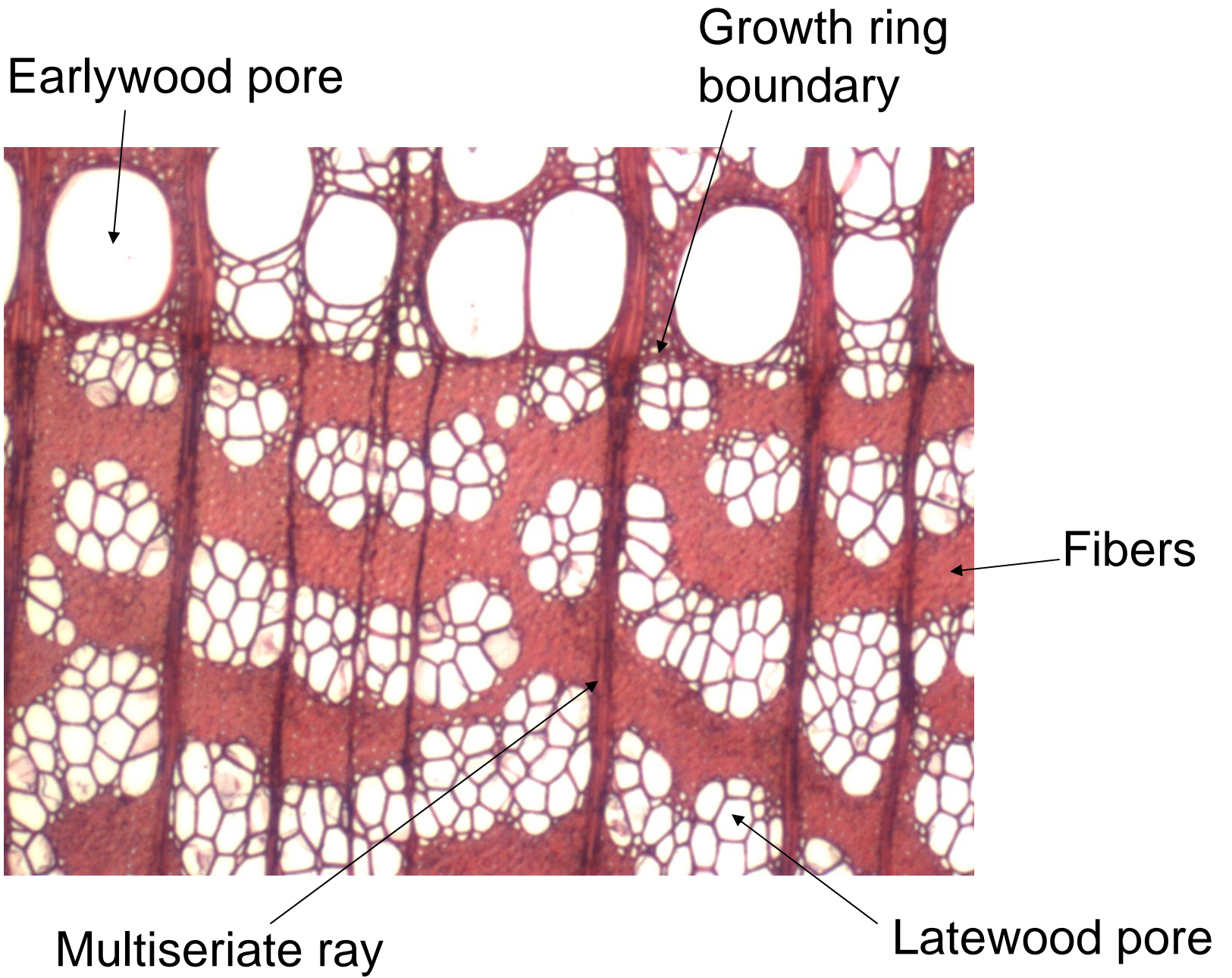


Fibers

Tyloses

Earlywood pore

Multiseriate ray



End grain



Earlywood pores

Banded latewood pattern