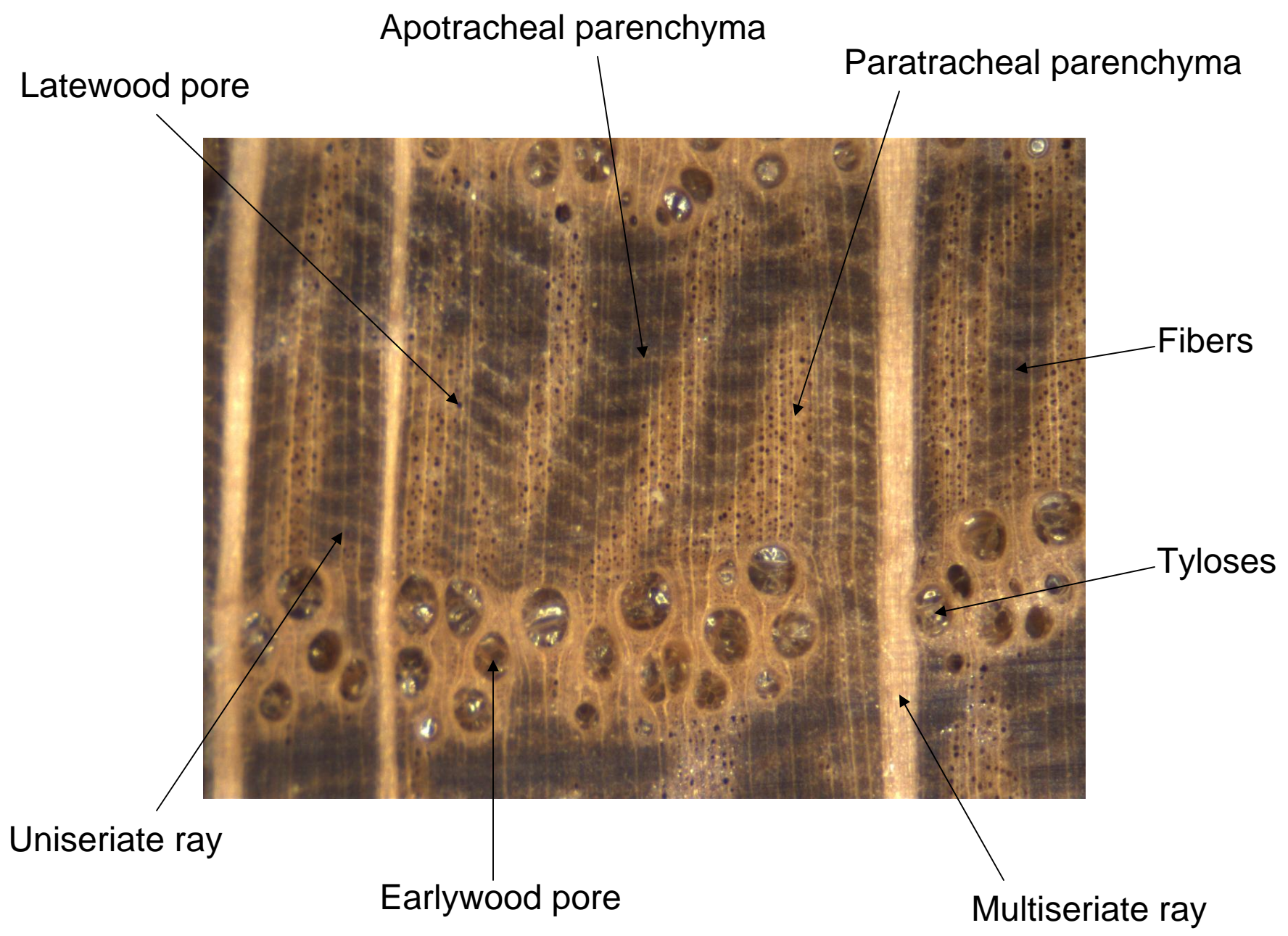


White oak (*Quercus alba*)

- Very dense wood
- Light to dark brown heartwood
- Ring porous
- Latewood pores indistinct with hand lens
- Abundant tyloses in earlywood pores
- Rays of two very distinct widths
 - Wider rays visible with naked eye
 - Narrower rays indistinct with hand lens
- Parenchyma in tangential bands and surrounding latewood pores



Apotracheal parenchyma

Paratracheal parenchyma

Latewood pore

Fibers

Tyloses

Uniseriate ray

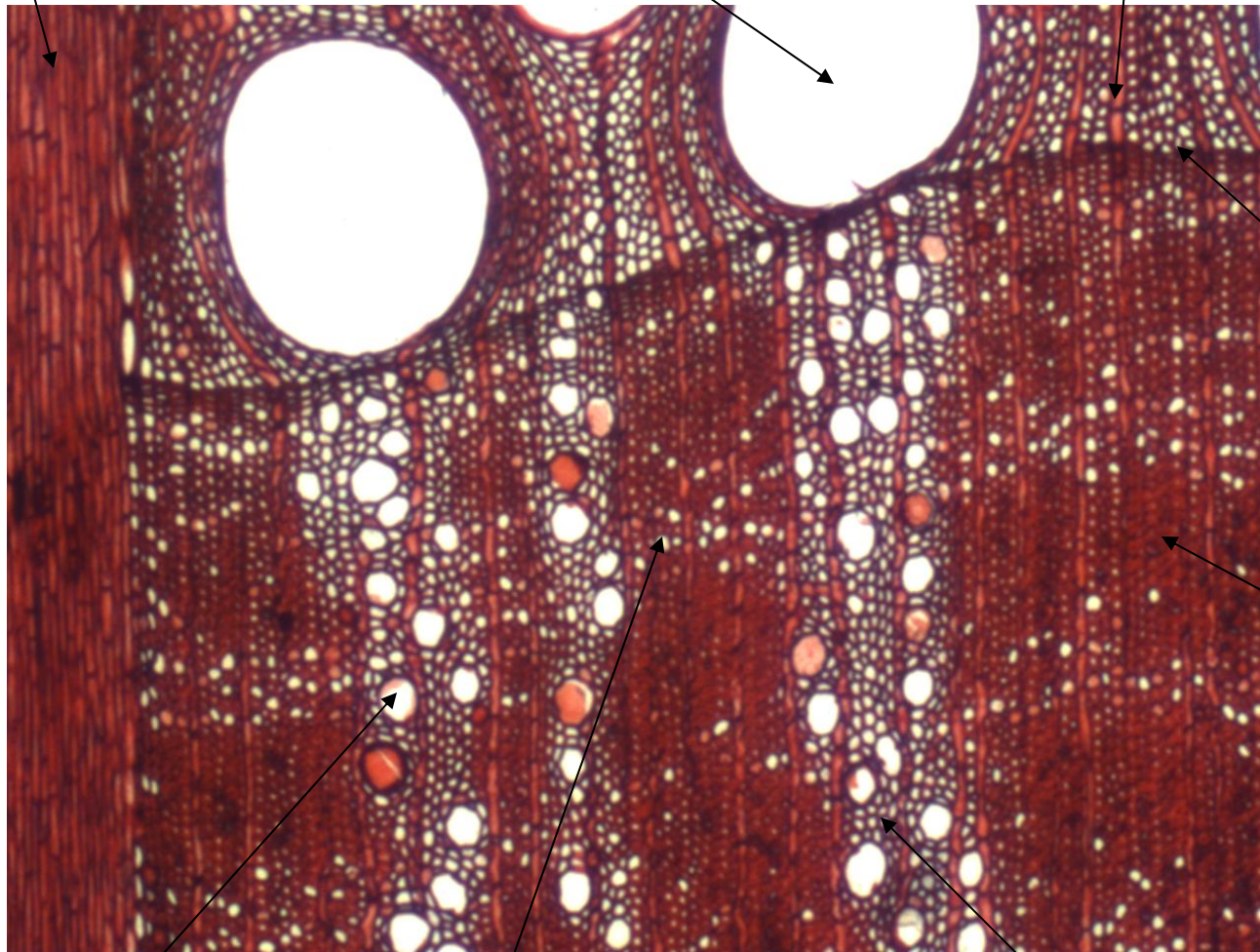
Earlywood pore

Multiseriate ray

Multiseriate ray

Earlywood pore

Uniseriate ray



Growth ring boundary

Fibers

Latewood pore

Apotracheal parenchyma

Paratracheal parenchyma

Tangential surface



End grain

