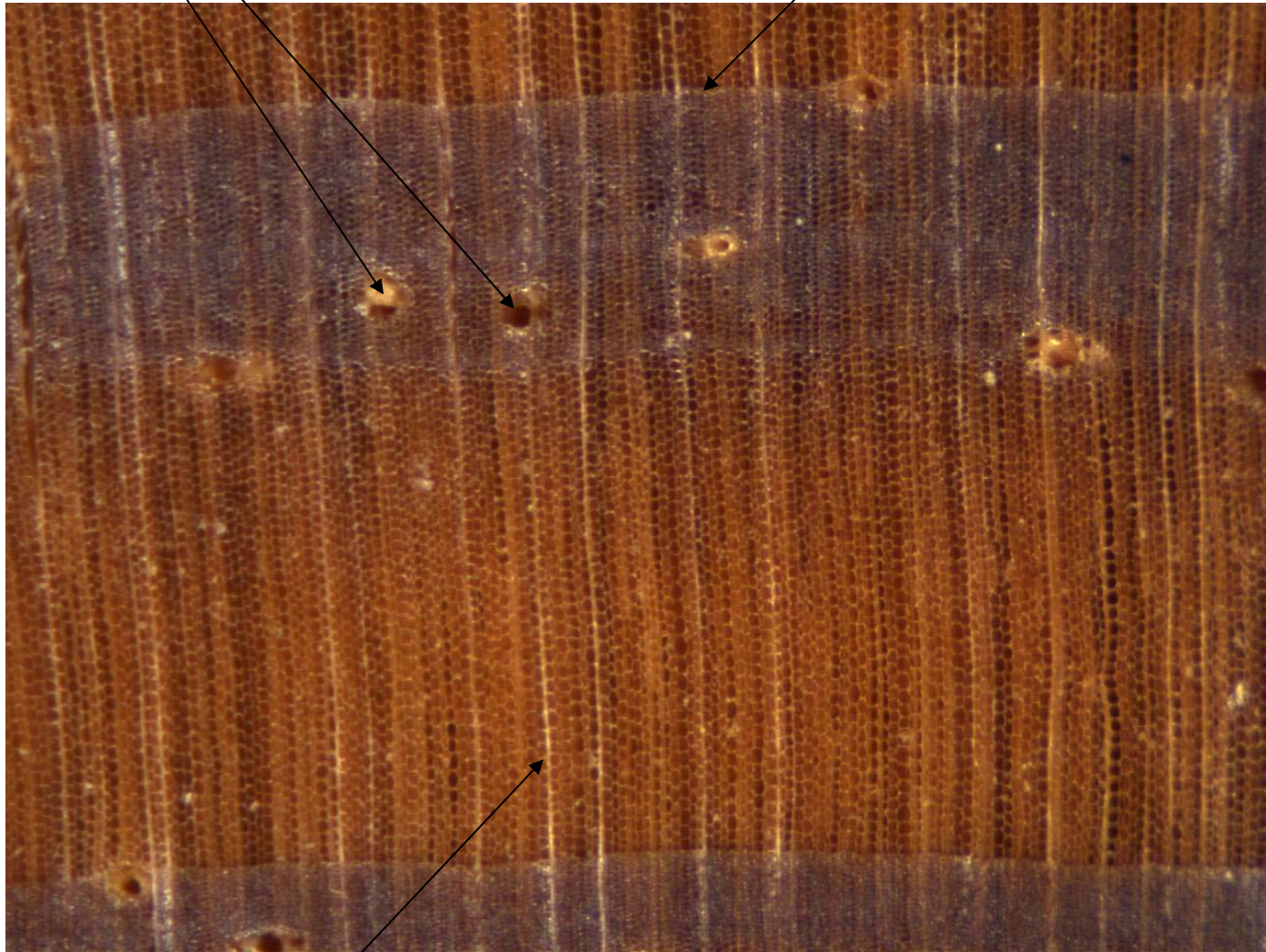


Southern pine (*Pinus* sp.)

- Yellow to orange to reddish brown heartwood
- Strong resinous odour
- Very abrupt earlywood-latewood transition
- Wide latewood band
- Resin canals large and numerous (usually solitary)

Resin canals

Growth ring boundary



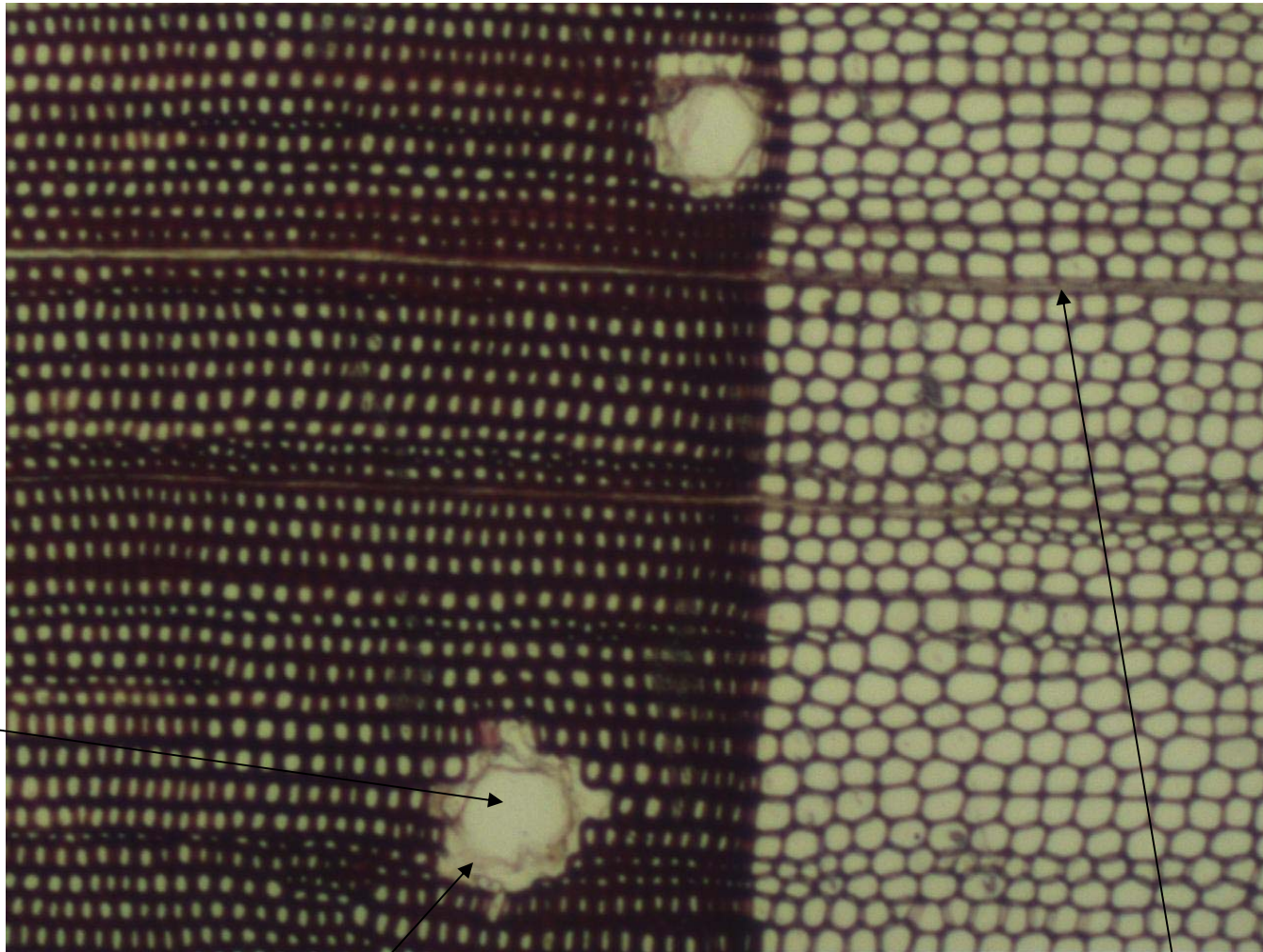
Latewood

Earlywood

Uniseriate ray

Latewood

Earlywood



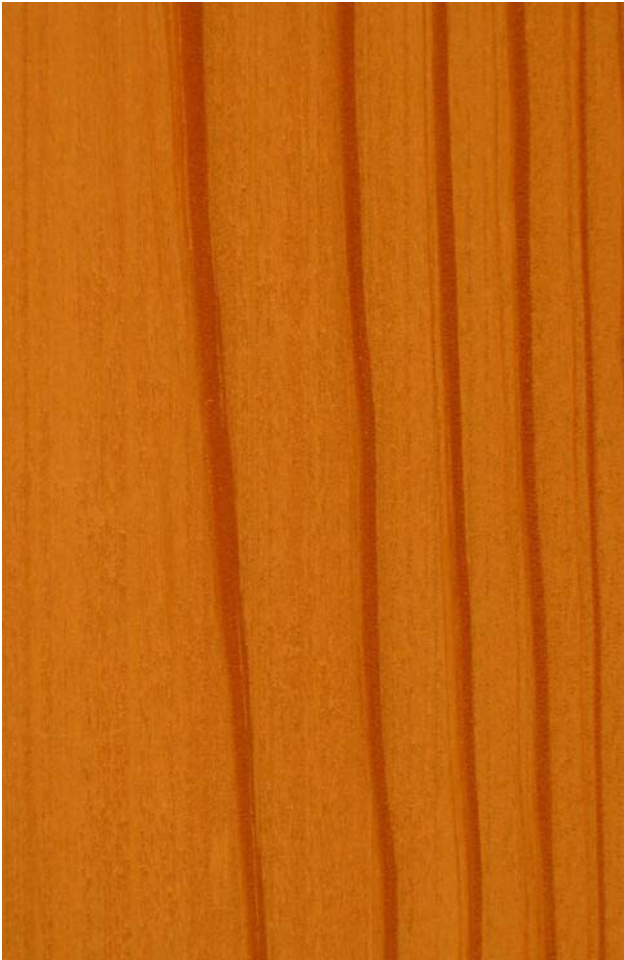
Resin canal

Epithelial parenchyma

Growth ring boundary

Uniseriate ray

Longitudinal grain



End grain

