

Western white pine (*Pinus monticola*)

- Cream to light brown heartwood
- Resinous odour
- Gradual earlywood-latewood transition
- Resin canals large and numerous (often appear as white flecks)

Fusiform ray

Uniseriate ray

Resin canal



Latewood

Earlywood

Growth ring boundary

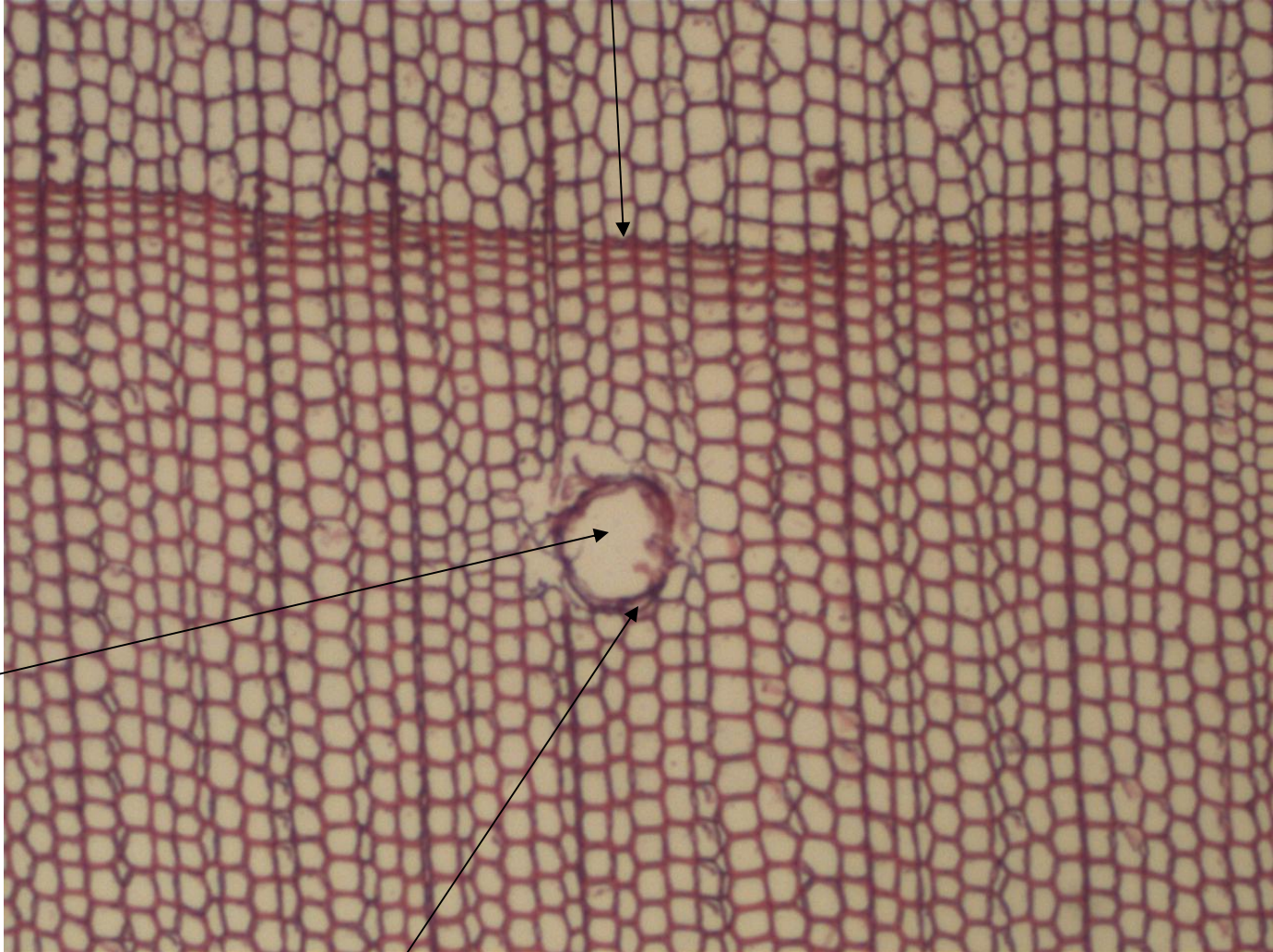
Growth ring boundary

Earlywood

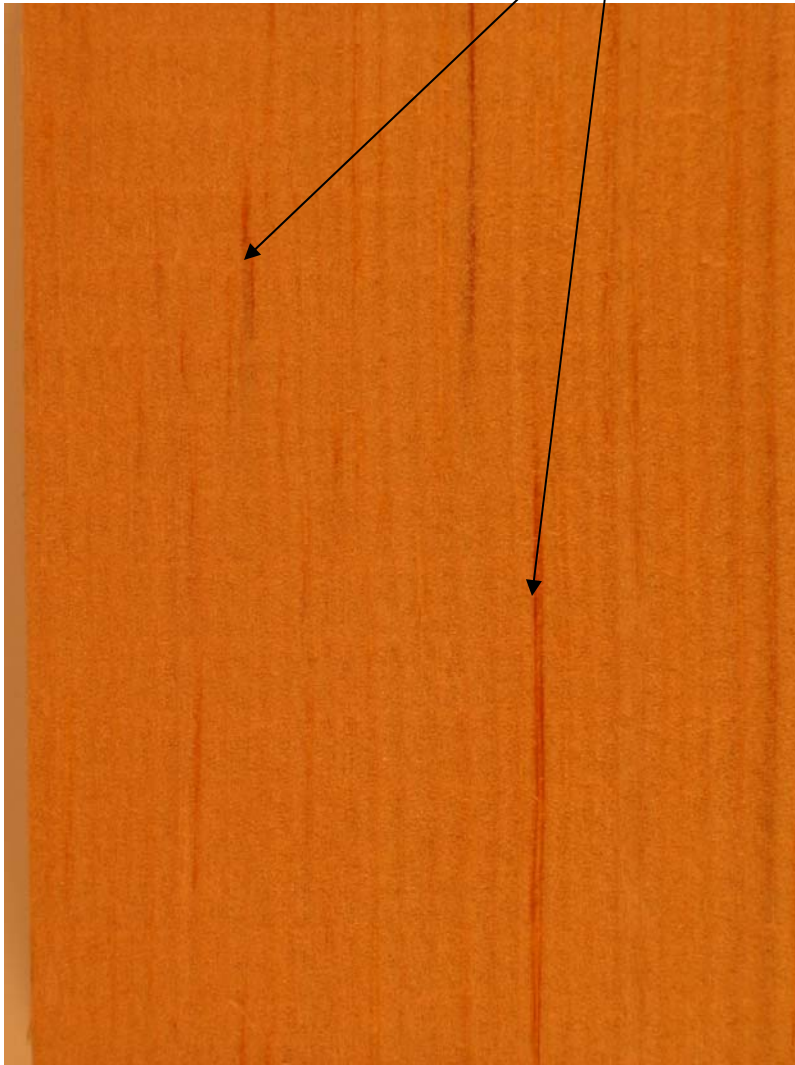
Latewood

Resin canal

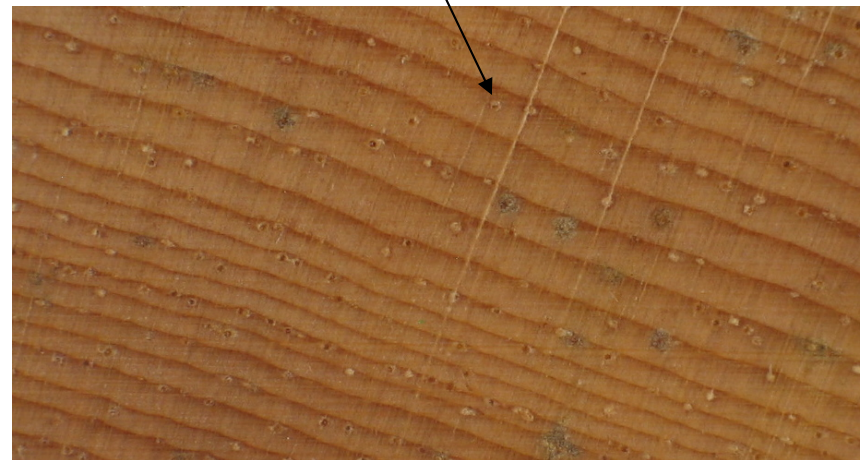
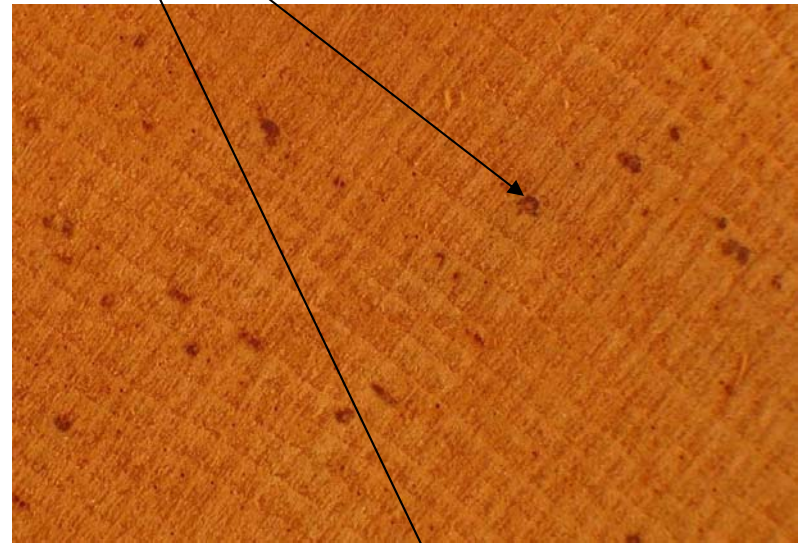
Epithelial parenchyma



Longitudinal resin canals



Longitudinal grain



End grain