

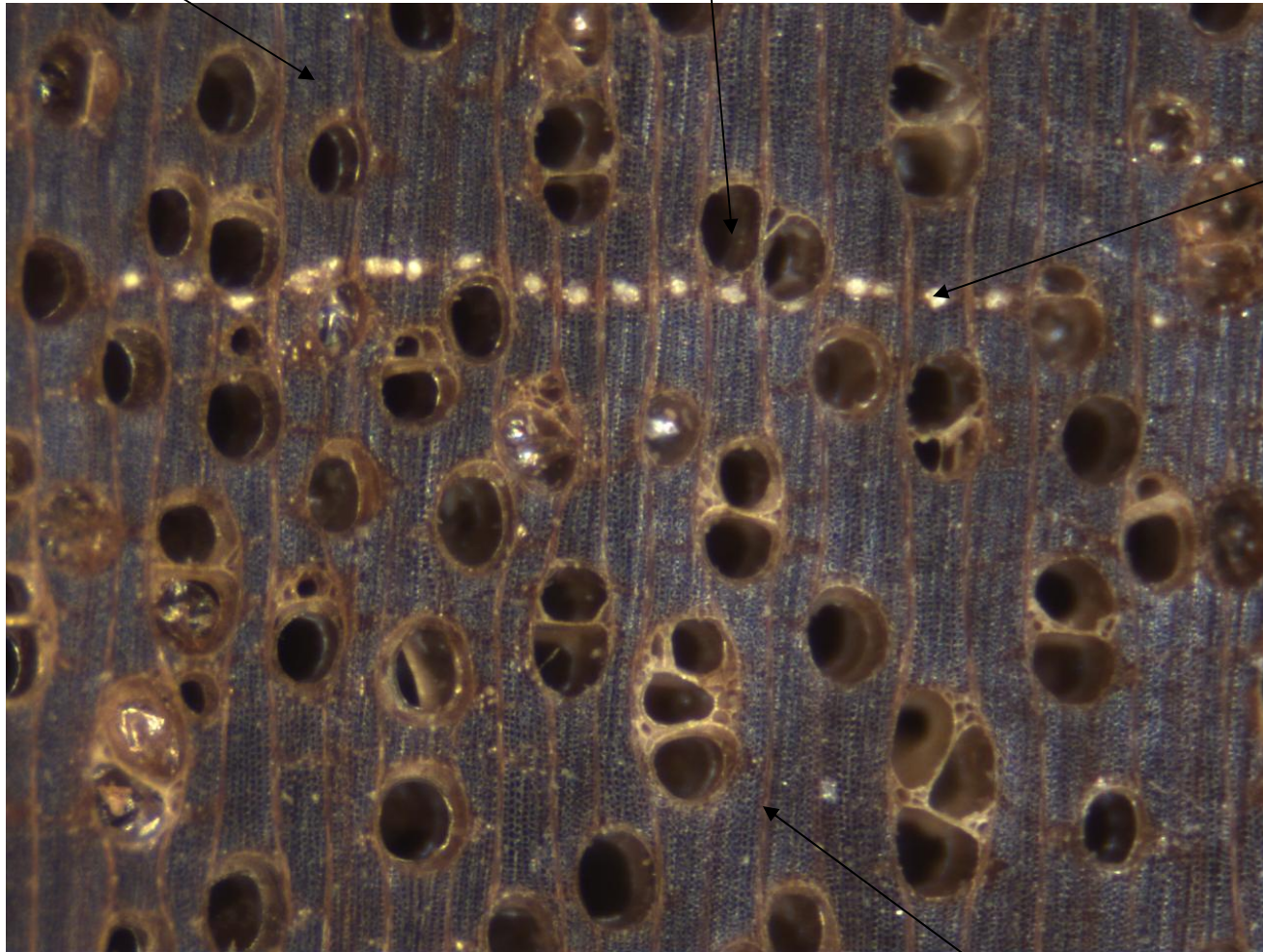
Red lauan (*Shorea sp.*)

- Reddish brown heartwood
- Medium density wood
- Growth rings absent
- Diffuse porous
 - pores solitary and in radial groups
- Rays distinct with hand lens
- Gum ducts in tangential lines (appear as white dots)
- Parenchyma visible around pores

Fibers

Pore

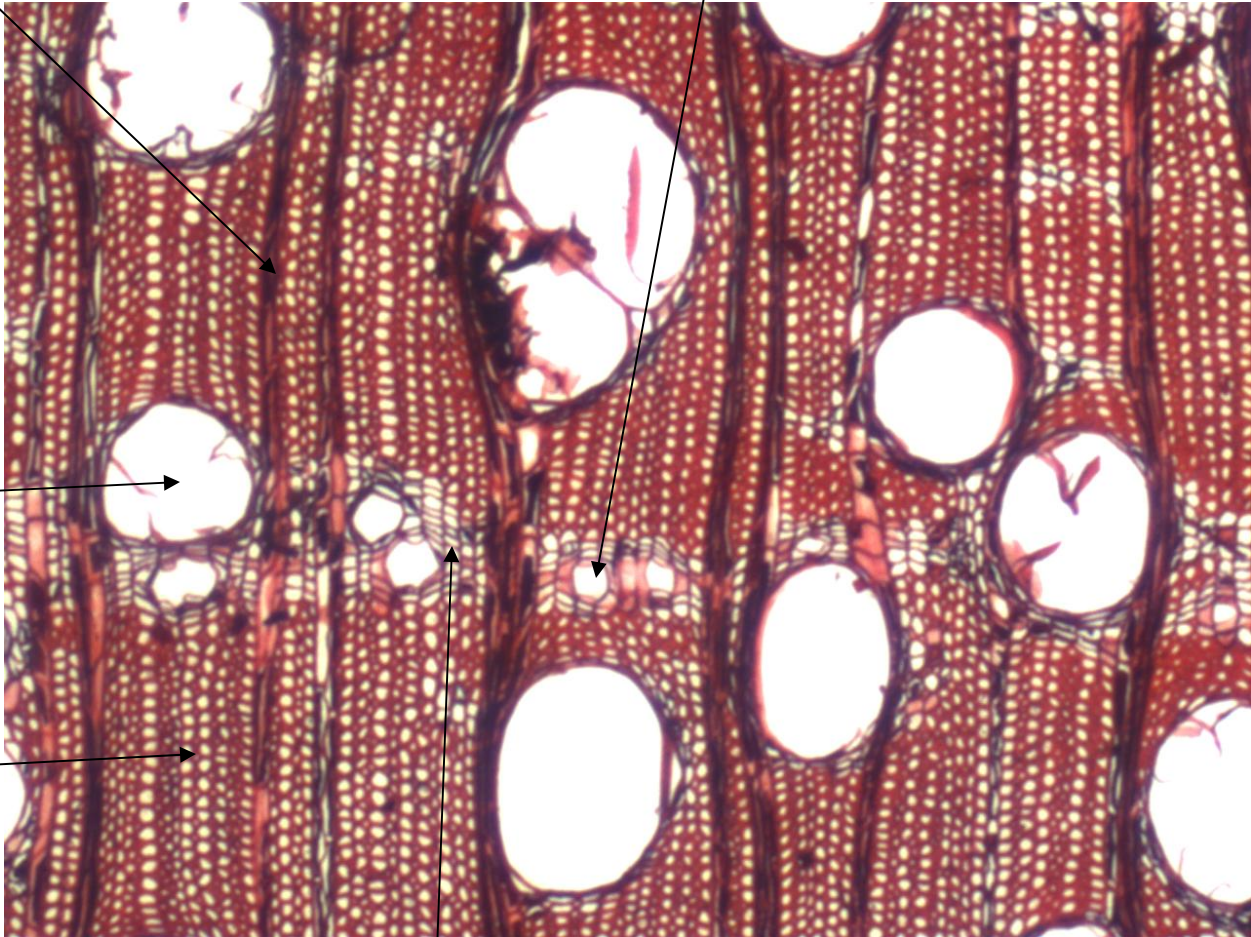
Gum duct



Multiseriate ray

Multiseriate ray

Gum duct

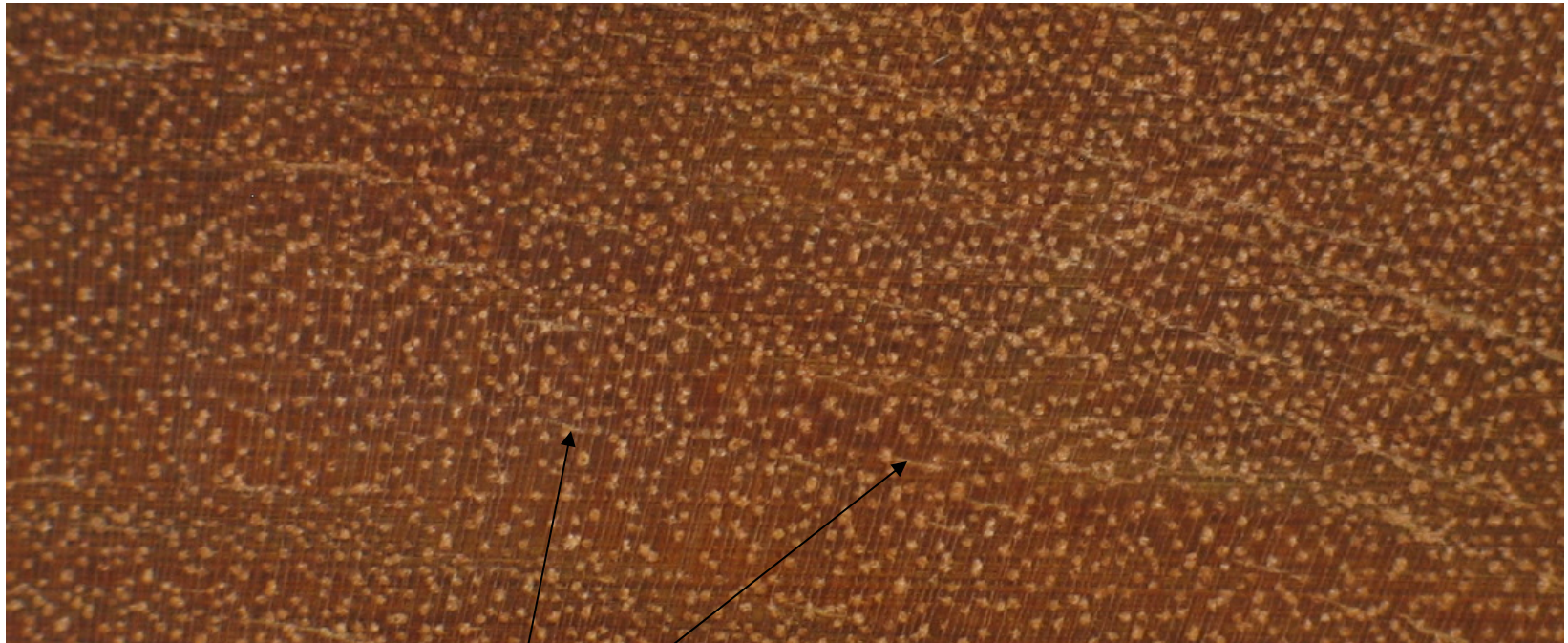


Pore

Fibers

Epithelial parenchyma

Endgrain



Gum canals