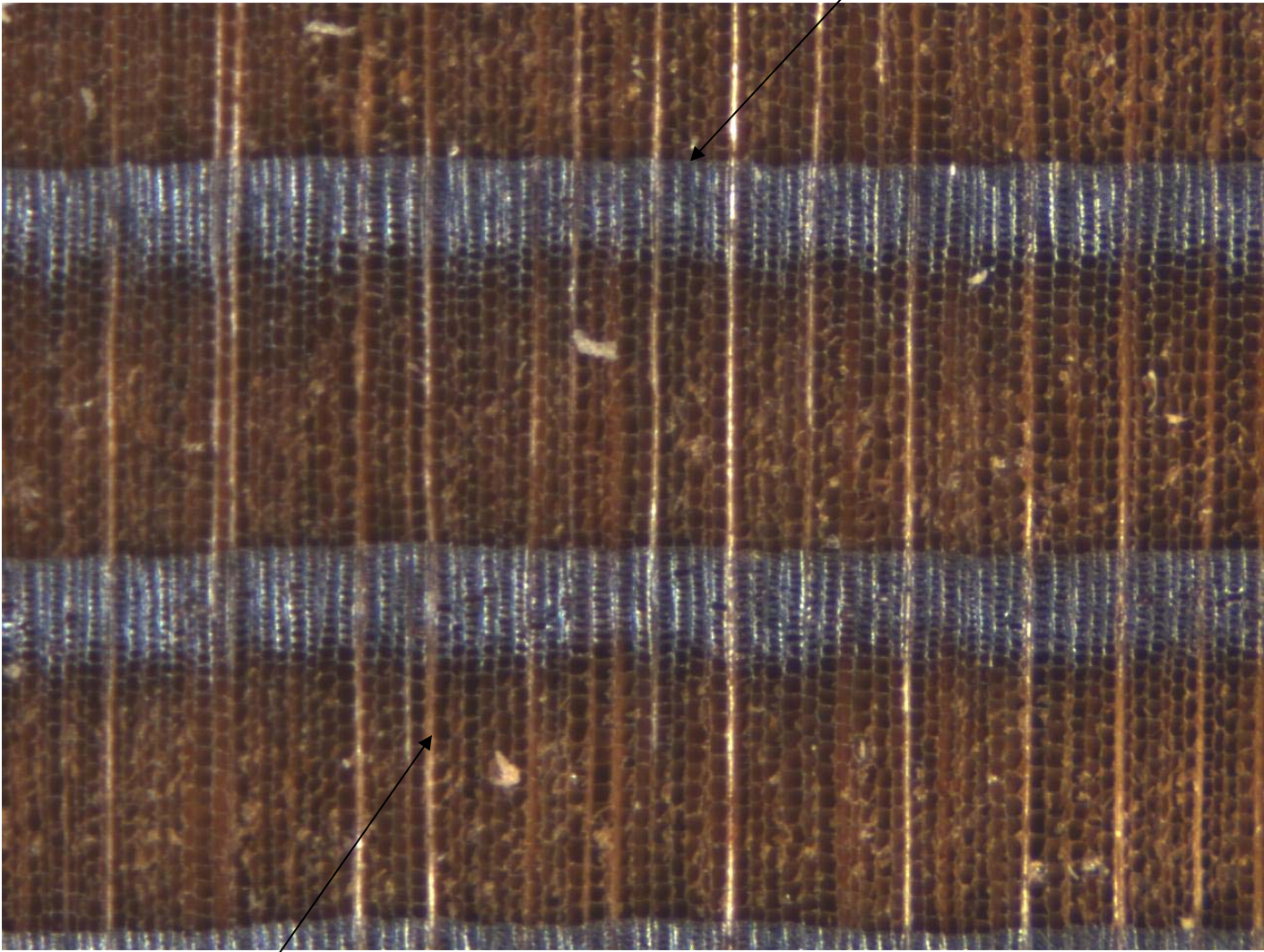


# Redwood (*Sequoia sempervirens*)

- Medium to deep reddish brown heartwood
- No odour
- Abrupt earlywood-latewood transition
- No normal resin canals
- Very coarse texture

Growth ring boundary



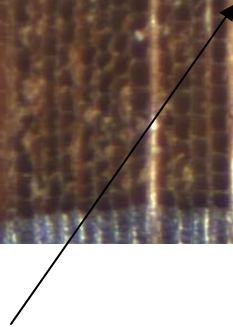
Latewood



Earlywood



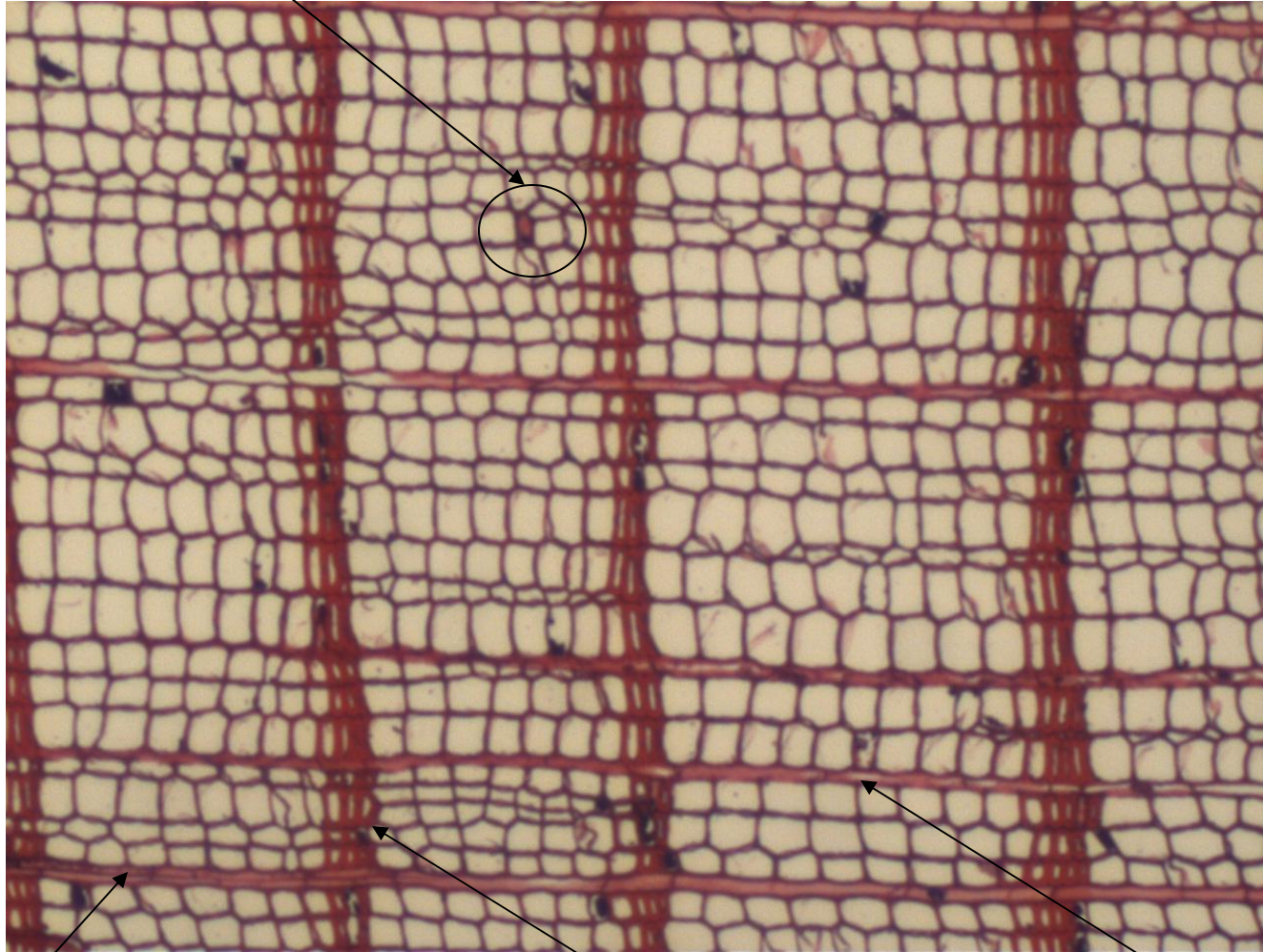
Uniseriate ray



Longitudinal parenchyma

Earlywood

Latewood



Biseriate ray

Growth ring boundary

Uniseriate ray



Longitudinal grain



End grain

