

Sycamore (*Platanus* sp.)

- Light to dark brown heartwood with reddish cast
- Moderately dense wood
- Diffuse porous
- Growth ring evident by lighter band and fewer pores at end of latewood
- Rays very distinct on all surfaces
- Parenchyma not visible

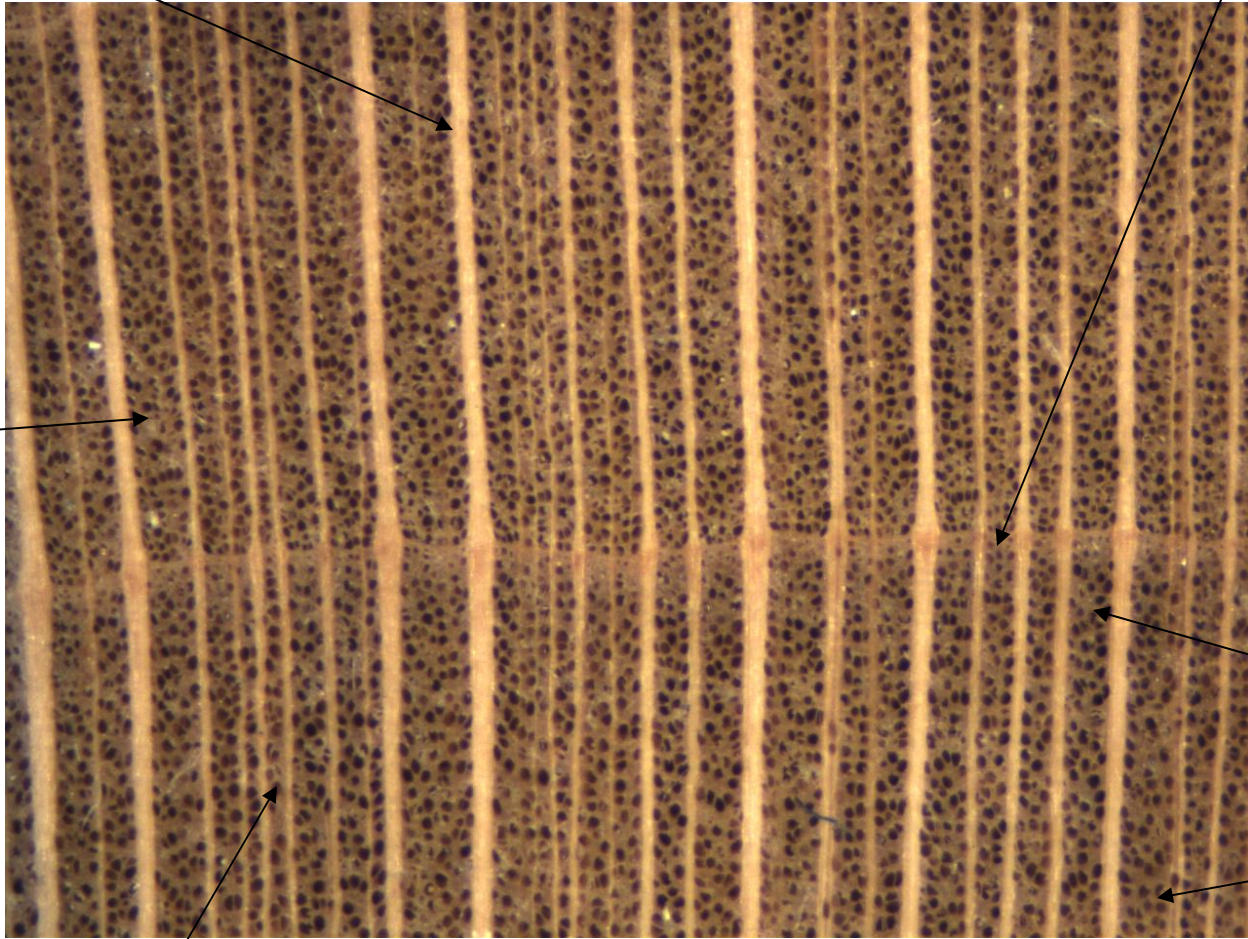
Multiseriate ray

Growth ring boundary

Fibers

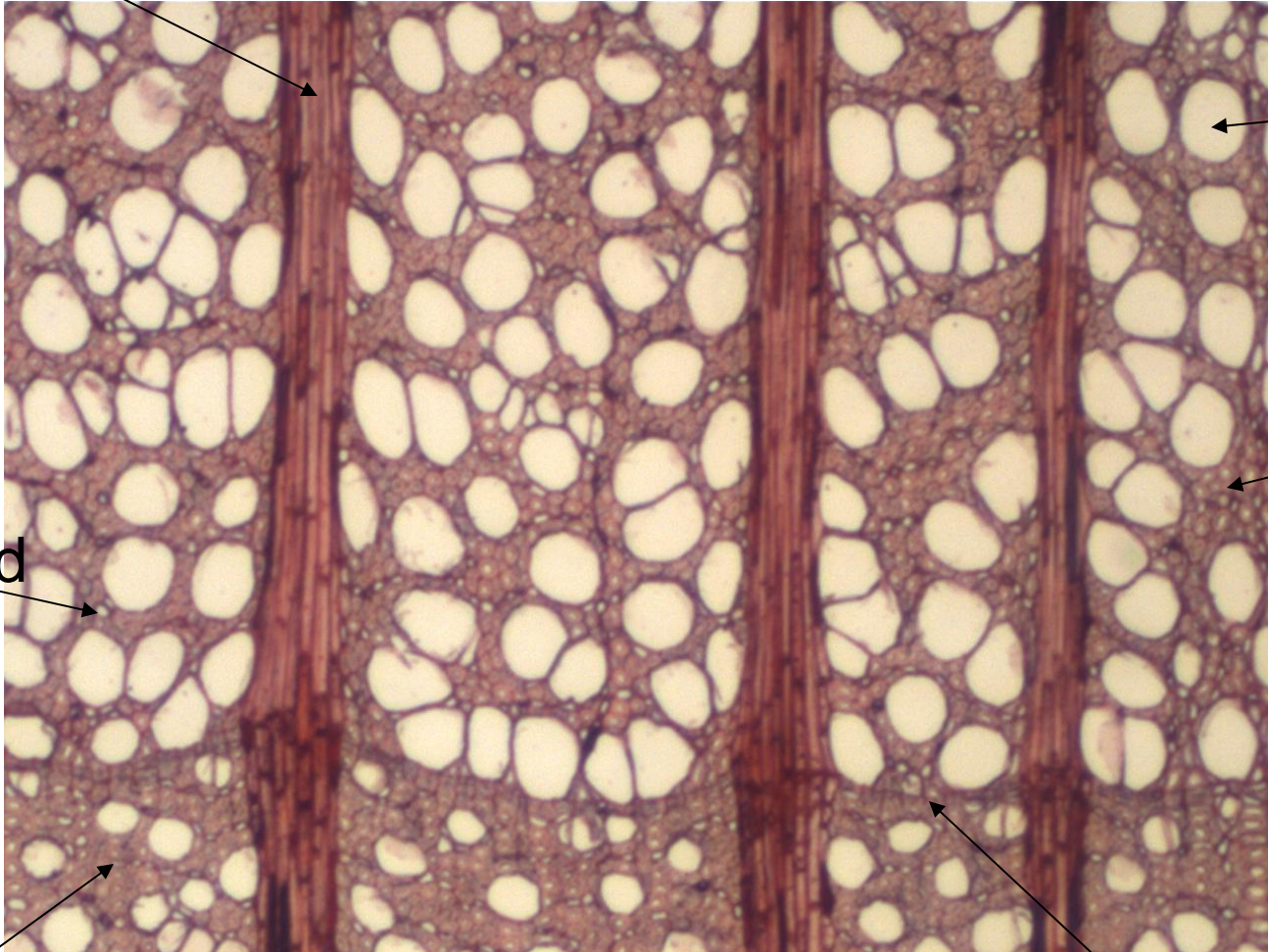
Latewood

Earlywood



Pore

Multiseriate ray



Pore

Fibers

Earlywood

Latewood

Growth ring boundary

Rays ends on
tangential surface

