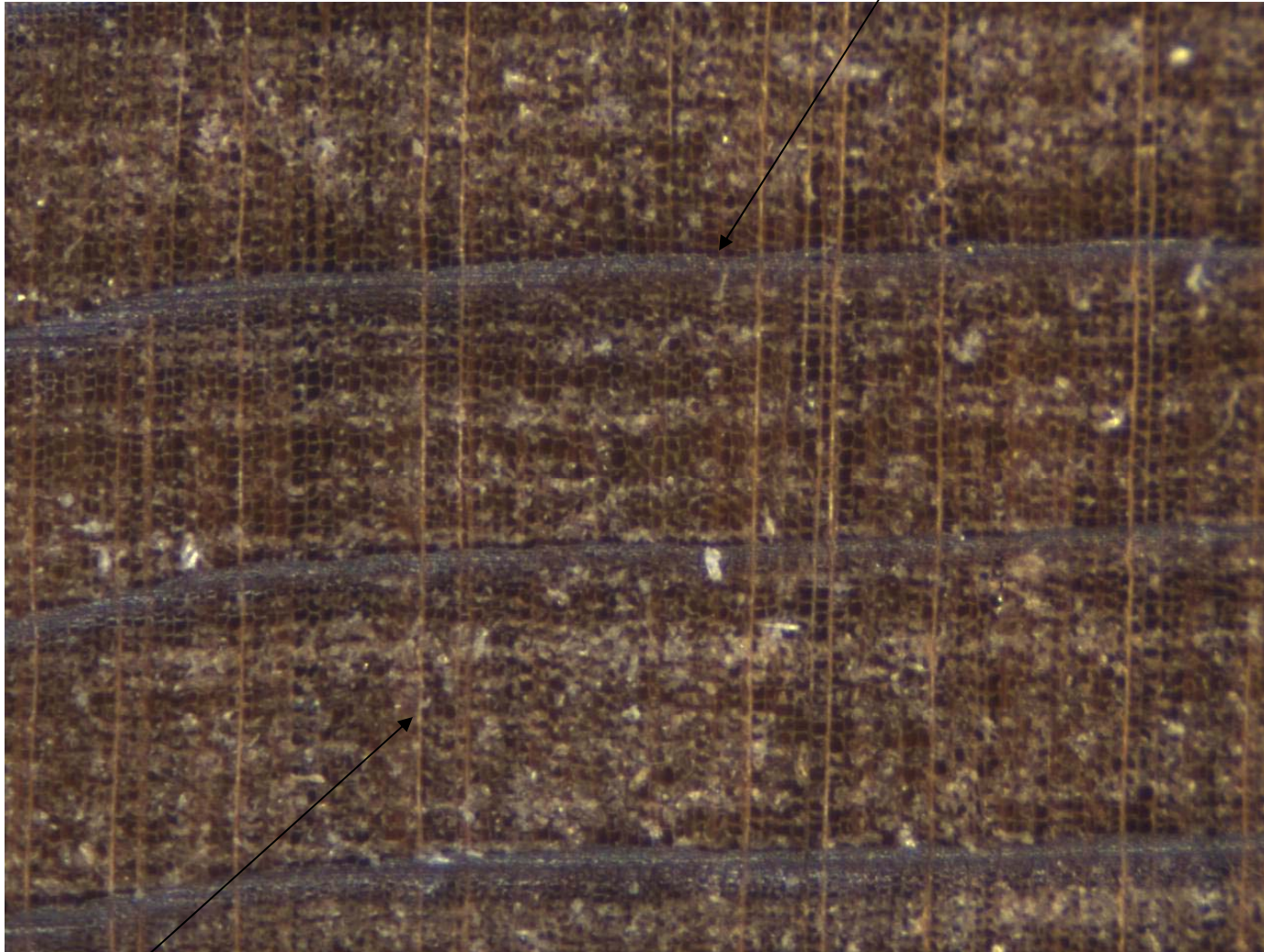


Western redcedar (*Thuja plicata*)

- Medium to dark brown or reddish brown heartwood
- Fragrant, sweet odour
- Abrupt earlywood-latewood transition
- Narrow latewood band
- Earlywood crumbles when cut
- No resin canals

Growth ring boundary



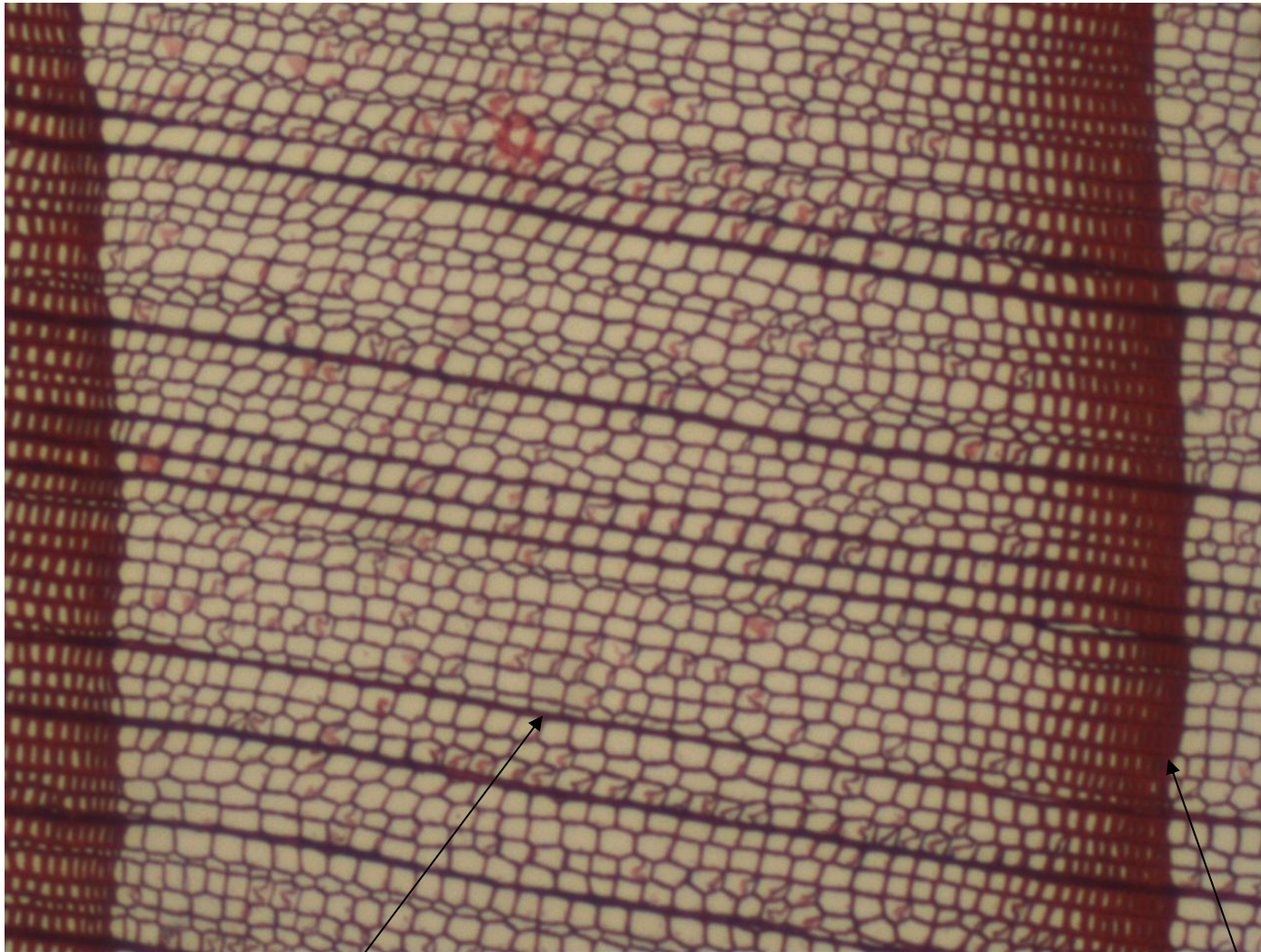
Uniseriate ray

Latewood

Earlywood

Earlywood

Latewood



Uniseriate ray

Growth ring boundary

Variation in heartwood colour



End grain

