

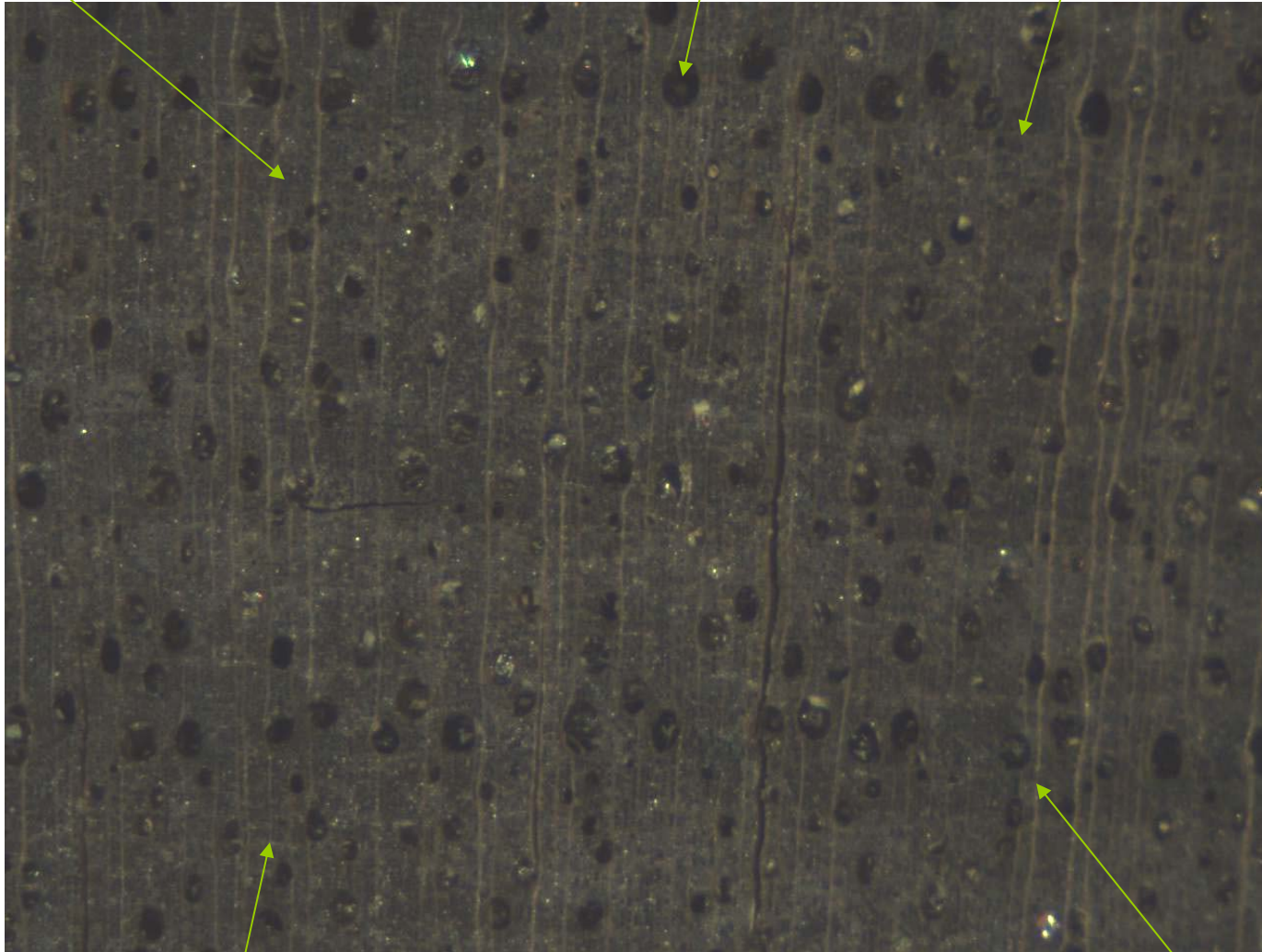
Black walnut (*Juglans nigra*)

- Chocolate brown heartwood
- Moderately dense wood
- Semi-ring porous
- Rays visible but not conspicuous with hand lens
- Parenchyma in short, fine tangential bands

Fibers

Pore

Growth ring boundary



Latewood

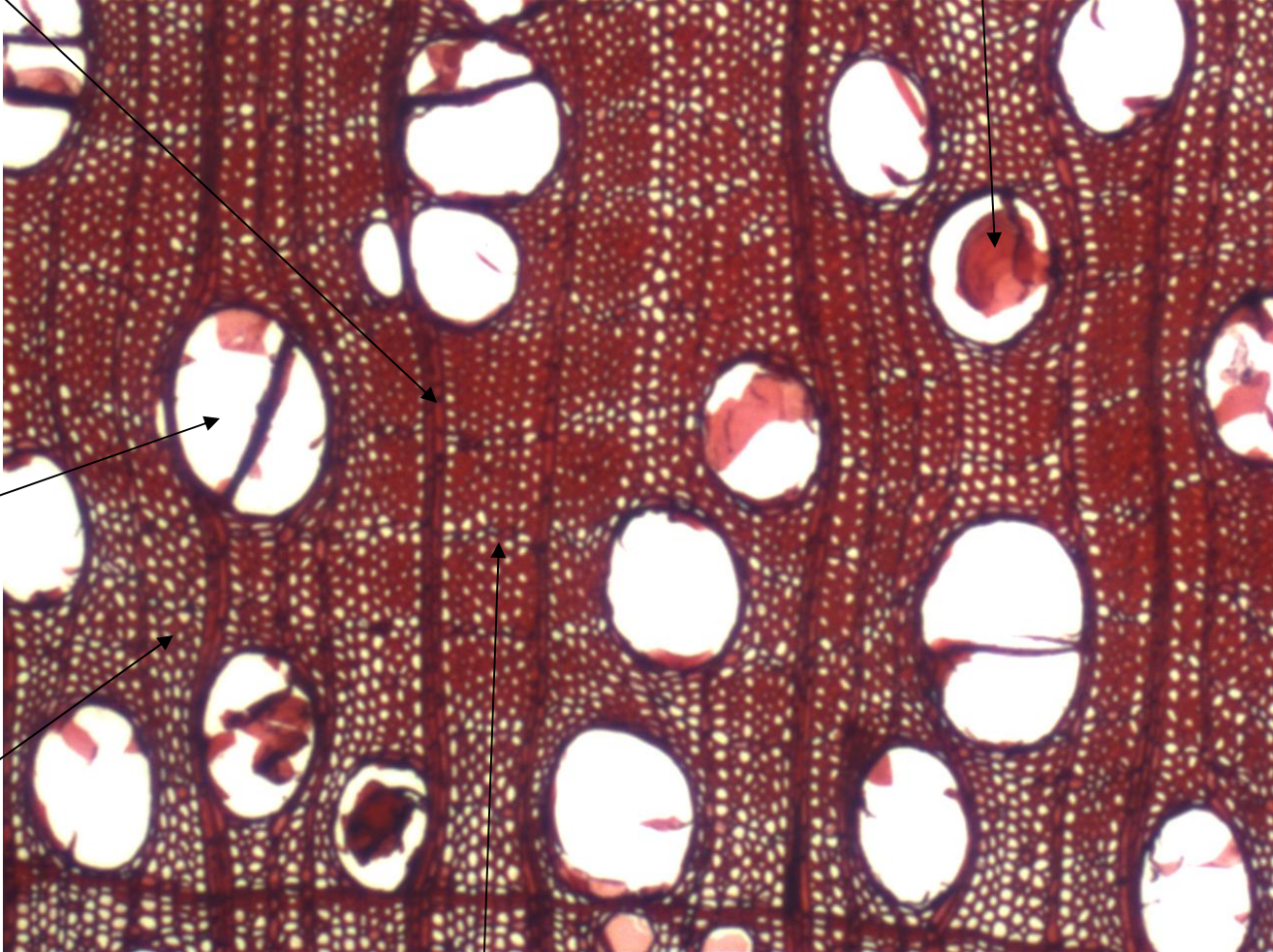
Earlywood

Parenchyma

Multiseriate ray

Multiseriate ray

Tylosis



Pore

Fibers

Parenchyma

Endgrain

